

KATSO THREE DEPARTURE

600Z NOV 19 01 600Z OCT 2009 22 'Z-WS

DEPARTURE ROUTE DESCRIPTION

TAKE-OFF RUNWAY 16: Climb heading 163° until crossing SAC VORTAC R-050, and left turn heading 120° to intercept SAC R-080 to KATSO INT. Thence...

TAKE-OFF RUNWAY 34: Climb heading 343° to 1000 then climbing right turn heading 050° to intercept HNW VOR/DME R-265 to HNW VOR/DME and via HNW R-150 to KATSO INT. Thence...

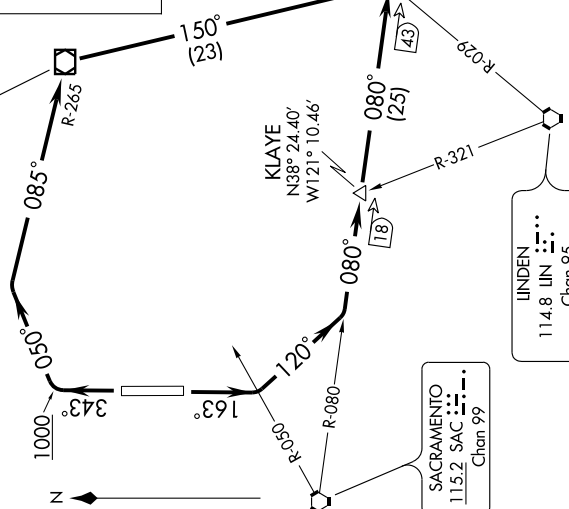
...via (transition) or (assigned route). Expect clearance to filed altitude after KATSO INT.

COALDALE TRANSITION [KATSO3.OAL]: From over KATSO INT via SAC R-080 to IQIGO INT and OAL R-263 to OAL VORTAC.

MINA TRANSITION [KATSO3.MVA]: From over KATSO INT via SAC R-080 to IQIGO INT and MVA R-242 to MVA VORTAC.

NORCAL DEP CON
127.4 317.5
CLNC DEL
119.825
UNICOM 122.975 (CTAF)

HANGTOWN
115.5 HNW
Chan 102
N38° 43.48'-W120° 44.96'



TAKE-OFF MINIMUMS
Rwy 16, 34: Standard. ATC climb of 205' per NM to 9000.

NOTE: DME required for COALDALE and MINA transitions.

NOTE: Chart not to scale.