


RNAV (GPS) RWY 21

ROSWELL INTL AIR CENTER (ROW)

WAAS CH 69302 W21A	APP CRS 215°	Rwy Idg 13001 TDZE 3633 Apt Elev 3671
--	------------------------	--

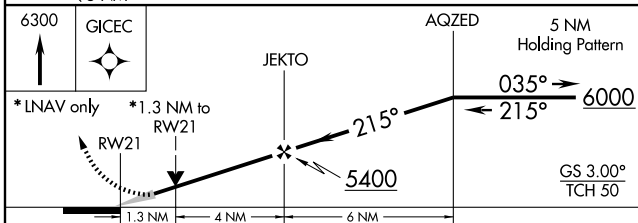
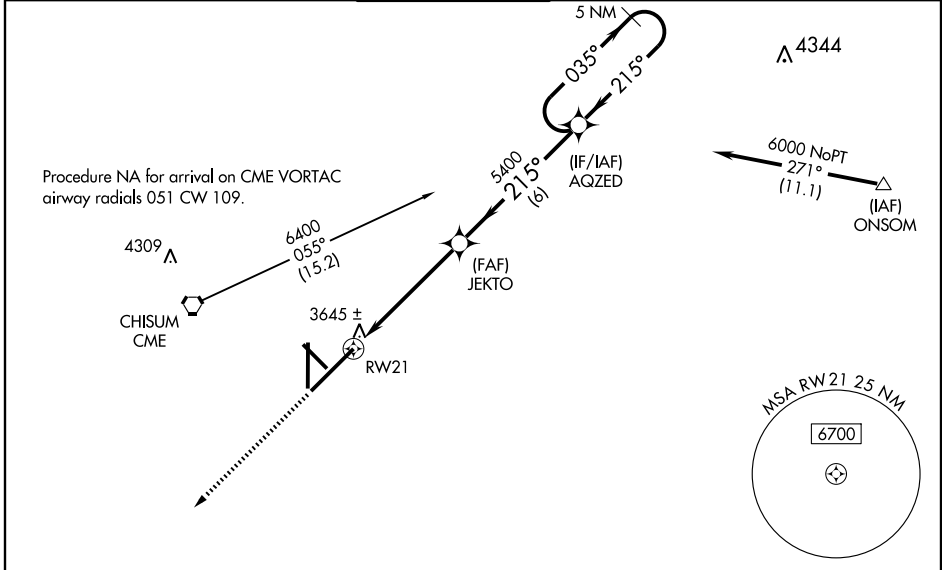
ASR DME/DME RNP-0.3 NA.
For uncompensated Baro-VNAV systems, LNAV/VNAV NA below -22°C (-7°F) or above 41°C (106°F).
If local altimeter setting not received, use Artesia altimeter setting and increase all DAs/MDAs 100 feet.
VDP and Baro-VNAV NA when using Artesia altimeter setting.
For inoperative MALSRS increase LPV all Cats. visibility to 1.

MALSRS

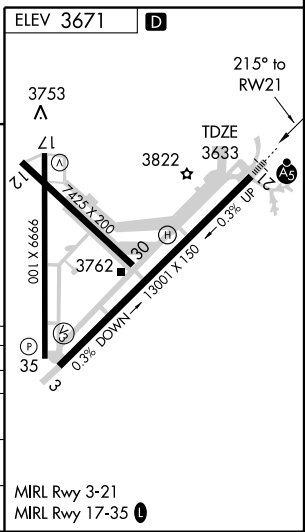


MISSED APPROACH: Climb to 6300 direct GICEC and hold.

ATIS 128.45 306.2	ROSWELL APP CON * 119.6 239.0	ROSWELL TOWER * 118.5 (CTAF) 233.7	GND CON 121.9 348.6	CLNC DEL 132.875 282.25	UNICOM 122.95
-----------------------------	---	--	-------------------------------	-----------------------------------	-------------------------



CATEGORY	A	B	C	D
LPV DA	3899-1/2		266 (300-1/2)	
LNAV/VNAV DA	3981-3/4		348 (400-3/4)	
LNAV MDA	4080-1/2 447 (500-1/2)		4080-3/4 447 (500-3/4)	
CIRCLING	4140-1 1/4 469 (500-1 1/4)		4140-1 1/2 469 (500-1 1/2)	



SW-1, 22 OCT 2009 to 19 NOV 2009

SW-1, 22 OCT 2009 to 19 NOV 2009