

# RNAV (GPS) RWY 17

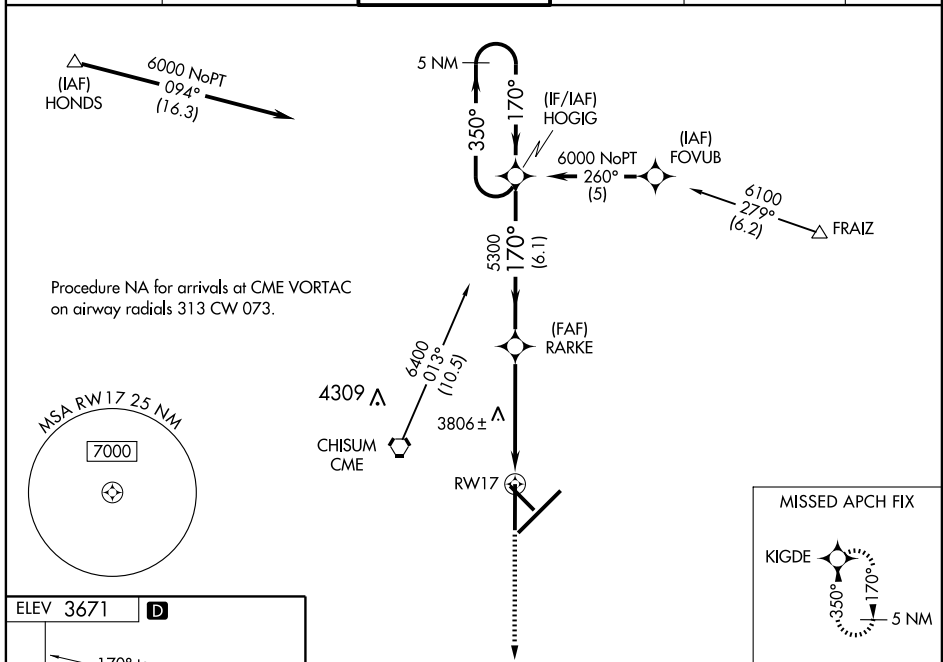
ROSWELL INTL AIR CENTER (ROW)

WAAS CH <b>65702</b> <b>W17A</b>	APP CRS <b>170°</b>	Rwy Idg TDZE Apt Elev	<b>9999</b> <b>3666</b> <b>3671</b>
--	------------------------	-----------------------------	---

**ASR** DME/DME RNP-0.3 NA.  
For uncompensated Baro-VNAV systems, LNAV/VNAV NA below -22°C (-7°F) or above 41°C (106°F).  
If local altimeter setting not received, use Artesia altimeter setting and increase all DAs/MDAs 100 feet.  
VDP and Baro-VNAV NA when using Artesia altimeter setting.

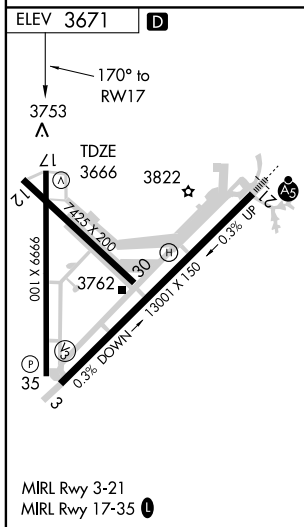
MISSED APPROACH: Climb to 6000 direct KIGDE and hold.

ATIS <b>128.45 306.2</b>	ROSWELL APP CON* <b>119.6 239.0</b>	ROSWELL TOWER* <b>118.5 (CTAF) 233.7</b>	GND CON <b>121.9 348.6</b>	CLNC DEL <b>132.875 282.25</b>	UNICOM <b>122.95</b>
-----------------------------	--	---	-------------------------------	-----------------------------------	-------------------------



SW-1, 22 OCT 2009 to 19 NOV 2009

SW-1, 22 OCT 2009 to 19 NOV 2009



6000	KIGDE	HOGIG	5 NM Holding Pattern	
*LNAV only	*1.3 NM to RWY 17	RARKE	350° → 6000	
	1.3 NM	3.6 NM	← 170°	
		6.1 NM	GS 3.00° TCH 50	
CATEGORY	A	B	C	D
LPV DA	3916-3/4 250 (300-3/4)			
LNAV/VNAV DA	4003-1 1/4 337 (400-1 1/4)			
LNAV MDA	4120-1	454 (500-1)	4120-1 1/4 454 (500-1 1/4)	4120-1 1/2 454 (500-1 1/2)
CIRCLING	4140-1 1/4	469 (500-1 1/4)	4140-1 1/2 469 (500-1 1/2)	4240-2 569 (600-2)