

ROCK SPRINGS, WYOMING

AL-353 (FAA)

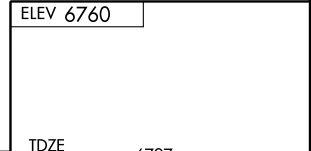
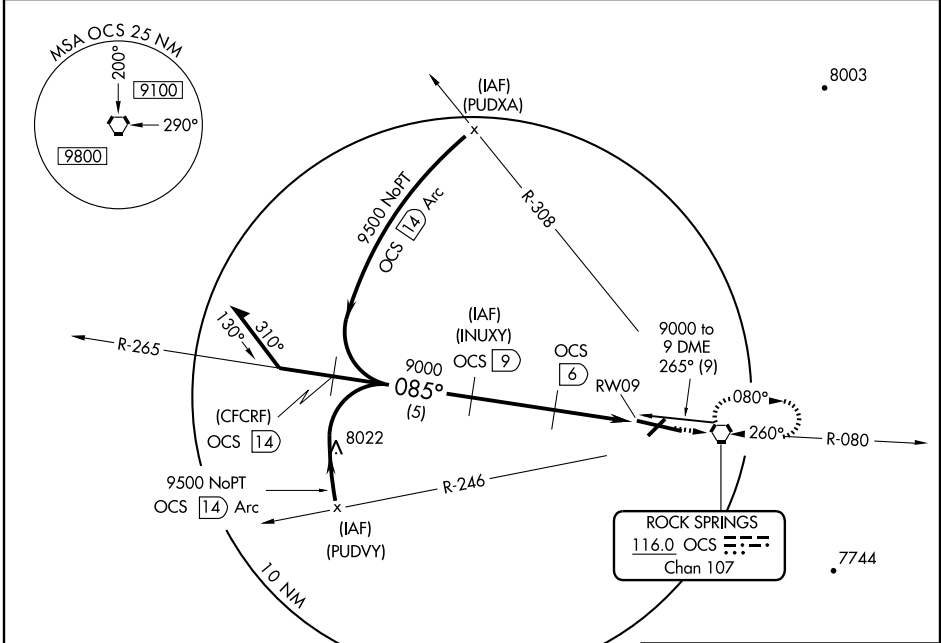
VOR/DME or GPS RWY 9

ROCK SPRINGS-SWEETWATER COUNTY (R.K.S)

VORTAC OCS 116.0 Chan 107	APP CRS 085°	Rwy Idg TDZE 6737 Apt Elev 6760
---	------------------------	---

	ODALS 	MISSED APPROACH: Climb to 9100 direct OCS VORTAC and hold.
--	-----------	--

ASOS 118.375	CASPER RADIO 122.6	UNICOM 122.8 (CTAF)
------------------------	------------------------------	-------------------------------



CATEGORY	A	B	C	D
S-9	7000- ³ / ₄ 263 (300- ³ / ₄)			7000-1 263 (300-1)
CIRCLING	7120-1 360 (400-1)	7220-1 460 (500-1)	7220-1 ¹ / ₂ 460 (500-1 ¹ / ₂)	7320-2 560 (600-2)

REIL Rwy 3 and 21
MIRL Rwy 3-21
HIRL Rwy 9-27

ROCK SPRINGS, WYOMING
Amdt 2A 09239

ROCK SPRINGS-SWEETWATER COUNTY (R.K.S)

VOR/DME or GPS RWY 9

41°36'N - 109°04'W

NW-1, 22 OCT 2009 to 19 NOV 2009

NW-1, 22 OCT 2009 to 19 NOV 2009