

ROCK SPRINGS, WYOMING

AL-353 (FAA)

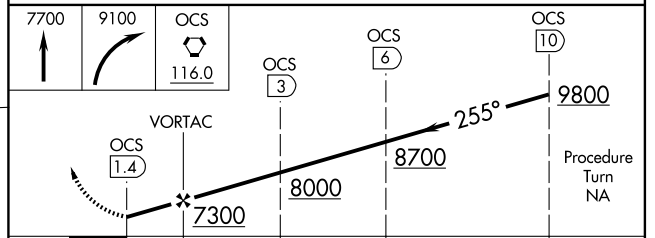
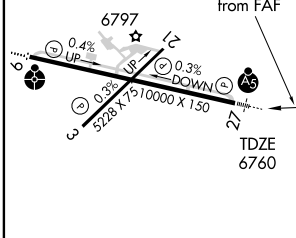
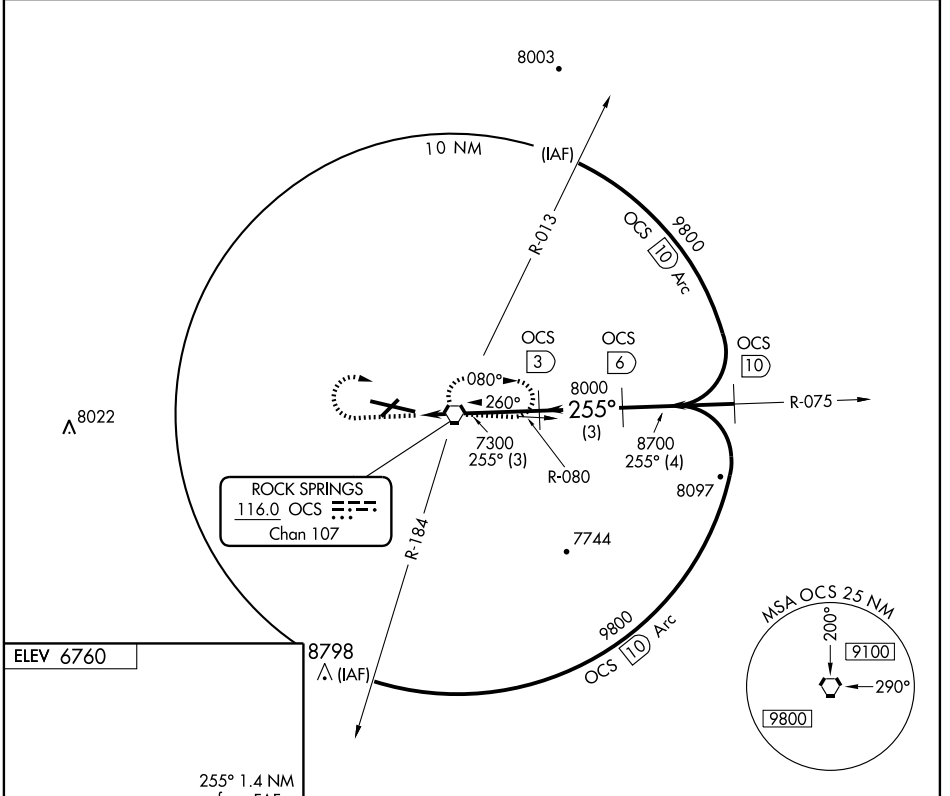
VORTAC OCS 116.0 Chan 107	APP CRS 255°	Rwy Idg 10000 TDZE 6760 Apt Elev 6760
---	------------------------	--

VOR/DME RWY 27

ROCK SPRINGS-SWEETWATER COUNTY (RKS)

Inoperative table does not apply to Cat. D.	MALSR	MISSED APPROACH: Climb to 7700, then climbing right turn to 9100 direct OCS VORTAC and hold.

ASOS 118.375	CASPER RADIO 122.6	UNICOM 122.8 (CTAF)
------------------------	------------------------------	-------------------------------



CATEGORY	A	B	C	D
S-27	7040-½ 280 (300-½)			7040-1 280 (300-2)
CIRCLING	7120-1 360 (400-1)	7220-1 460 (500-1)	7220-1½ 460 (500-1½)	7320-2 560 (600-2)

ROCK SPRINGS, WYOMING
Amdt 2 09239

41°36'N - 109°04'W

VOR/DME RWY 27

ROCK SPRINGS-SWEETWATER COUNTY (RKS)

NW-1, 22 OCT 2009 to 19 NOV 2009

NW-1, 22 OCT 2009 to 19 NOV 2009