


RNAV (GPS) Z RWY 27

ROCK SPRINGS-SWEETWATER COUNTY (R.K.S)

APP CRS 270°	Rwy Idg 10000
	TDZE 6760
	Apt Elev 6760

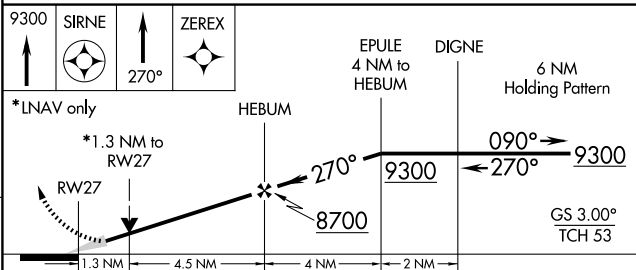
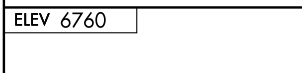
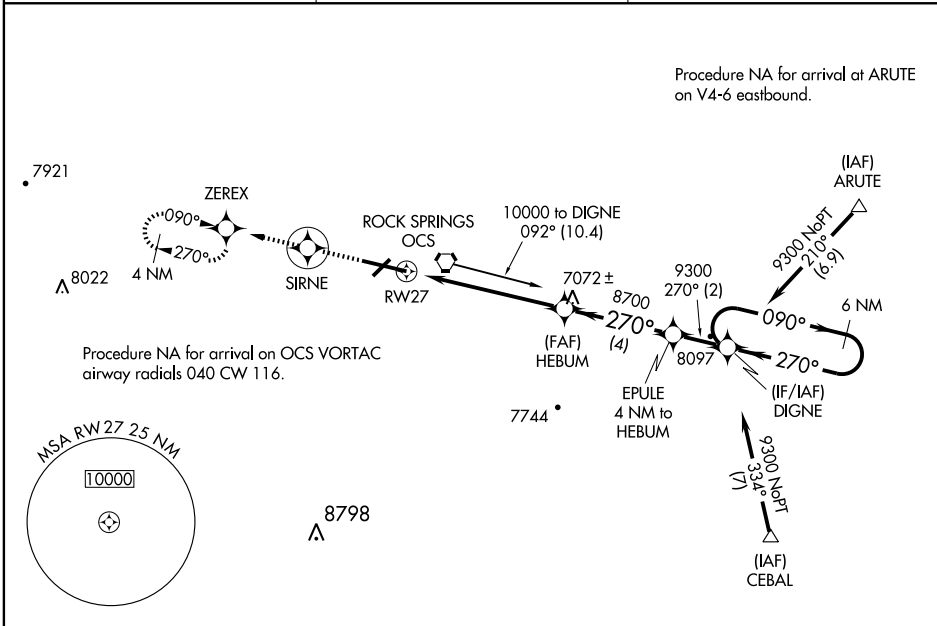
NA GPS or RNP-0.3 required. DME/DME RNP-0.3 NA. Baro-VNAV NA below -28°C (-18°F). For inoperative MALSR, increase LNAV/VNAV Cat. D visibility to 1 mile.

MALSR

MISSED APPROACH: Climb to 9300 direct SIRNE WP and via 270° track to ZEREX WP and hold.

ASOS
118.375

CASPER RADIO
122.6

UNICOM
122.8 (CTAF)



CATEGORY	A		B		C		D	
GLS PA DA	NA							
LNAV/VNAV DA	7040-1/2		280 (300-1/2)		7040-3/4		280 (300-3/4)	
LNAV MDA	7220-1/2 460 (500-1/2)		7220-3/4 460 (500-3/4)		7220-1 460 (500-1)		7220-1 460 (500-1)	
CIRCLING	7220-1 460 (500-1)		7220-1 1/2 460 (500-1 1/2)		7220-1 1/2 460 (500-1 1/2)		7320-2 560 (600-2)	

NW-1, 22 OCT 2009 to 19 NOV 2009

NW-1, 22 OCT 2009 to 19 NOV 2009