

RNAV (GPS) Y RWY 27

ROCK SPRINGS-SWEETWATER COUNTY (R.K.S)

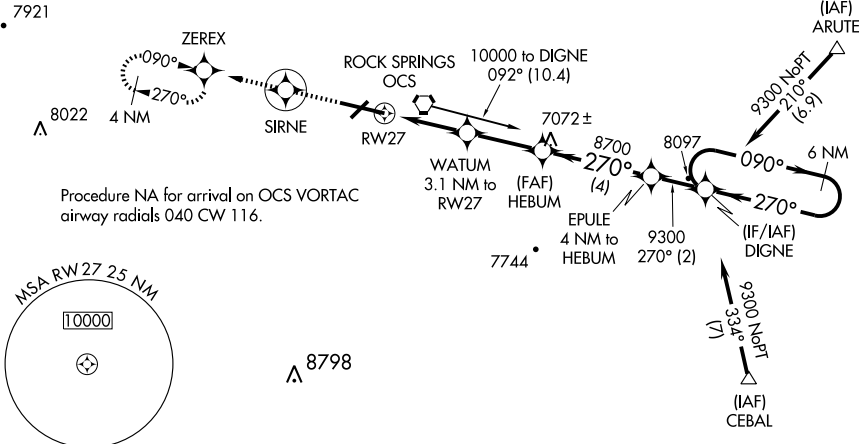
APP CRS 270°	Rwy Idg 10000
	TDZE 6764
	Apt Elev 6764

▽ DME/DME RNP- 0.3 NA.
For inoperative MALS, increase Cat D visibility to 1 1/4 mile.

MALS
MISSED APPROACH: Climb to 9300 direct SIRNE WP and via 270° track to ZEREX WP and hold.

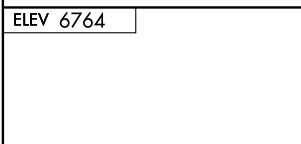
ASOS 118.375	CASPER RADIO 122.6	UNICOM 122.8 (CTAF) ①
------------------------	------------------------------	--

Procedure NA for arrival at ARUTE on V4-6 eastbound.



NW-1, 22 OCT 2009 to 19 NOV 2009

NW-1, 22 OCT 2009 to 19 NOV 2009



Procedure NA for arrival at CEBAL on V328 southeast bound.

9300	SIRNE	ZEREX	EPULE 4 NM to HEBUM	DIGNE	6 NM Holding Pattern
↑	⊙	↑ 270°			
<p>WATUM 3.1 NM to RW27</p> <p>HEBUM</p> <p>3.05° TCH 53</p> <p>8700</p> <p>9300</p> <p>9300</p> <p>090° →</p> <p>← 270°</p> <p>1 NM 2.1 NM 2.7 NM 4 NM 2 NM</p>					
CATEGORY	A		B	C	D
LNAV MDA	7120-1/2		356 (400-1/2)	7120-1	356 (400-1)
CIRCLING	7120-1	7220-1	7220-1 1/4	7320-1 1/4	556 (600-1 3/4)
	356 (400-1)	456 (500-1)	456 (500-1 1/4)		

- REIL Rwy 3 and 21 **①**
- MIRL Rwy 3-21 **①**
- HIRL Rwy 9-27 **①**