

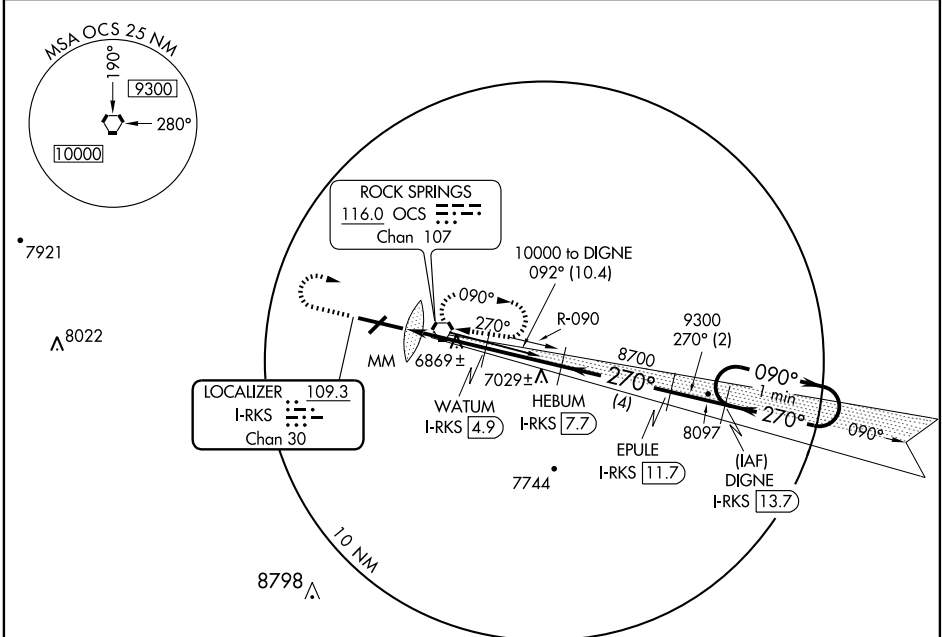
# ILS or LOC/DME RWY 27

ROCK SPRINGS-SWEETWATER COUNTY (R.K.S)

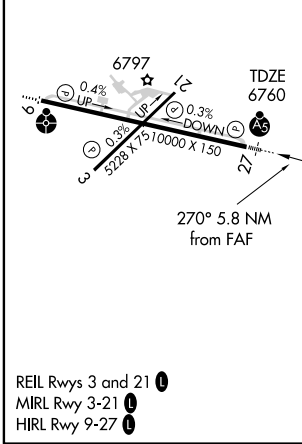
LOC/DME I-RKS <b>109.3</b> Chan 30	APP CRS <b>270°</b>	Rwy Idg TDZE <b>6760</b> Apt Elev <b>6760</b>
--	------------------------	---

MALSR	MISSED APPROACH: Climb to 7400, then climbing right turn to 9300 direct OCS VORTAC and hold.

ASOS <b>118.375</b>	CASPER RADIO <b>122.6</b>	UNICOM <b>122.8</b> (CTAF)
------------------------	------------------------------	-------------------------------



ELEV 6760
-----------



## DME REQUIRED

7400	9300	OCS 116.0	HEBUM I-RKS 7.7	EPULE I-RKS 11.7	DIGNE I-RKS 13.7
* LOC only					
I-RKS 1.8	WATUM I-RKS 4.9	8700	9300	9300	9300
MM	7800*	8700	270°	090°	270°
0.5	2.6 NM	2.8 NM	4 NM	2 NM	
CATEGORY	A	B	C	D	
S-ILS-27	6960-1/2 200 (200-1/2)				
S-LOC 27	7120-1/2 360 (400-1/2)		7120-3/4 360 (400-3/4)	7220-3/4 360 (400-3/4)	
CIRCLING	7120-1 360 (400-1)	7220-1 460 (500-1)	7220-1 1/2 460 (500-1 1/2)	7320-2 560 (600-2)	

One Minute Holding Pattern

GS 3.00° TCH 53

NW-1, 22 OCT 2009 to 19 NOV 2009

NW-1, 22 OCT 2009 to 19 NOV 2009