

ROCHESTER, NEW YORK

AL-351 (FAA)

VOR/DME ROC 110.0 Chan 37	APP CRS 052°	Rwy Idg 8001 TDZE 535 Apt Elev 559
--	------------------------	---

VOR/DME RWY 4

ROCHESTER / GREATER ROCHESTER INTL (ROC)

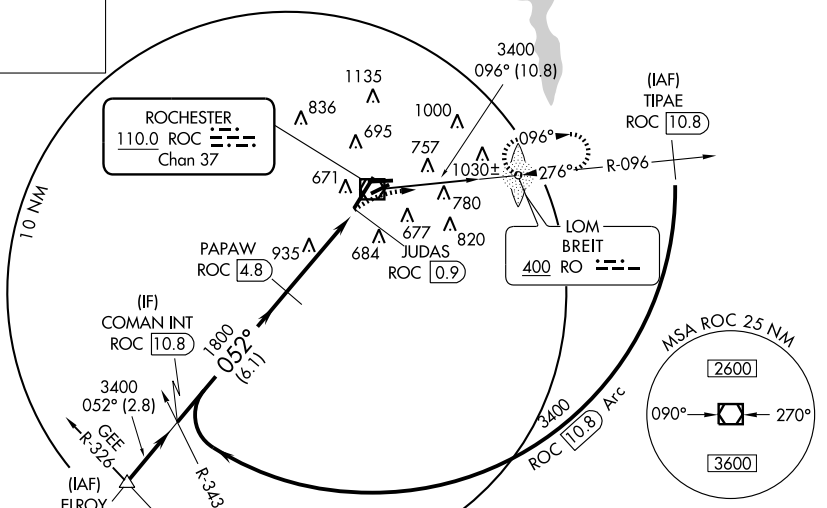
ALSF-2
 For inoperative ALSF-2, increase S-4 Cats. A, B visibility to RVR 5000.
 Visibility reduction by helicopters NA.

MISSED APPROACH: Climbing right turn to 3000 via heading 060° and ROC VOR/DME R-096 to BREIT LOM/INT/ROC 5.3 DME and hold, continue climb-in-hold to 3000.

ATIS 124.825	ROCHESTER APP CON 119.55 269.6	ROCHESTER TOWER 118.3 254.3	GND CON 121.7	CLNC DEL 118.8 387.0
------------------------	--	---------------------------------------	-------------------------	--------------------------------

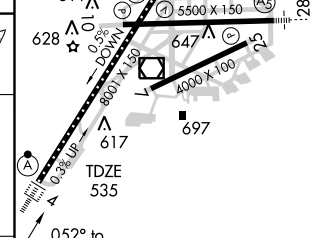
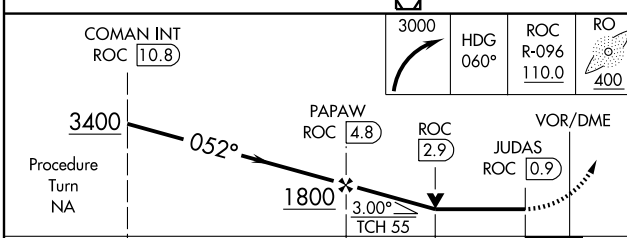
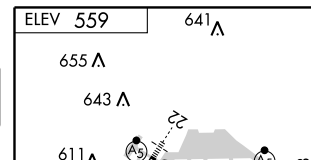
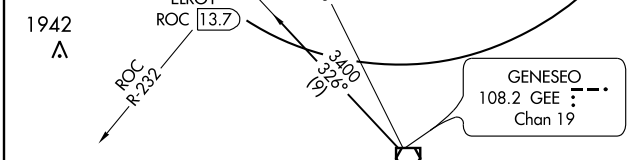
ALTERNATE MISSED
 APCH FIX

 ROCHESTER
 ROC **110.0**
 Chan 37



NE-2, 22 OCT 2009 to 19 NOV 2009

NE-2, 22 OCT 2009 to 19 NOV 2009



CATEGORY	A	B	C	D
S-4	1200/40 665 (700-¾)		1200/60 665 (700-1¼)	1200-1½ 665 (700-1½)
CIRCLING	1200-1 641 (700-1)		1200-1¾ 641 (700-1¾)	1240-2¼ 681 (700-2¼)

TDZ/CL Rwy 4
 REIL Rws 7, 10 and 25
 MRL Rwy 7-25
 HIRL Rws 10-28 and 4-22

ROCHESTER, NEW YORK
 Amdt 3A 09211

ROCHESTER / GREATER ROCHESTER INTL (ROC)
 43°07'N - 77°40'W

VOR/DME RWY 4