

ROCHESTER, NEW YORK

AL-351 (FAA)

VOR/DME ROC 110.0 Chan 37	APP CRS 052°	Rwy Idg 8001 TDZE 535 Apt Elev 559
---	------------------------	---

ROCHESTER / GREATER ROCHESTER INTL (ROC)
VOR RWY 4

- For inoperative ALSF-2, increase S-4 Cats. A, B visibility to RVR 5000.
- Visibility reduction by helicopters NA.



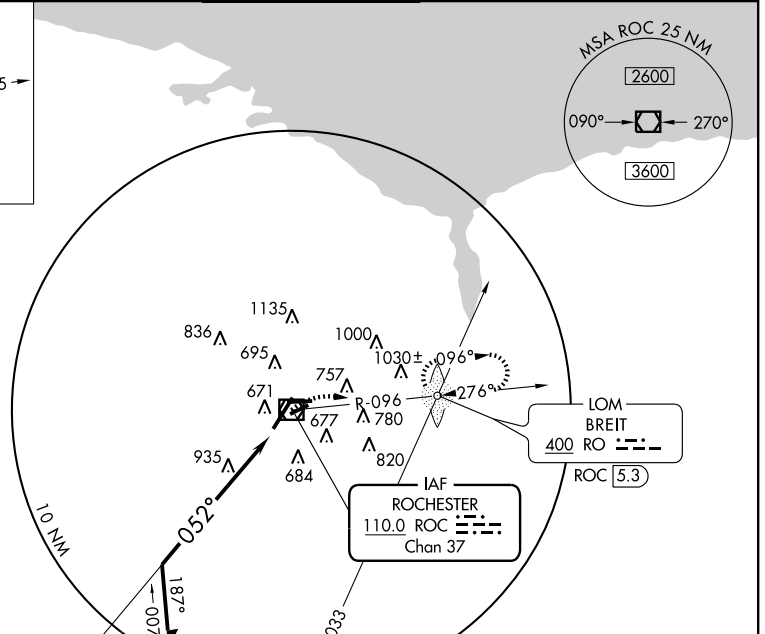
MISSED APPROACH: Climbing right turn to 3000 via heading 130° and ROC VOR/DME R-096 to BREIT LOM/INT/ROC 5.3 DME and hold, continue climb-in-hold to 3000.

ATIS 124.825	ROCHESTER APP CON 119.55 269.6	ROCHESTER TOWER 118.3 254.3	GND CON 121.7	CLNC DEL 118.8 387.0
------------------------	--	---------------------------------------	-------------------------	--------------------------------

ALTERNATE MISSED APCH FIX

ROCHESTER ROC 110.0 Chan 37

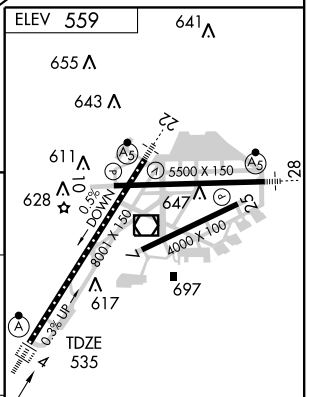
MSA ROC 25 NM



Remain within 10 NM

2600

	VOR/DME	ROC	RO
	3000	R-096 110.0	400



CATEGORY	A	B	C	D
S-4	1240/40	705 (700-¾)	1240-1½ 705 (700-1½)	1240-1¾ 705 (700-1¾)
CIRCLING	1240-1	681 (700-1)	1240-2 681 (700-2)	1240-2¼ 681 (700-2¼)

TDZ/CL Rwy 4
REIL Rwys 7, 10 and 25
MIRL Rwy 7-25
HIRL Rwys 10-28 and 4-22

ROCHESTER, NEW YORK
Amdt 11A 09211

ROCHESTER / GREATER ROCHESTER INTL (ROC)
VOR RWY 4

43°07'N - 77°40'W

NE-2, 22 OCT 2009 to 19 NOV 2009

NE-2, 22 OCT 2009 to 19 NOV 2009