

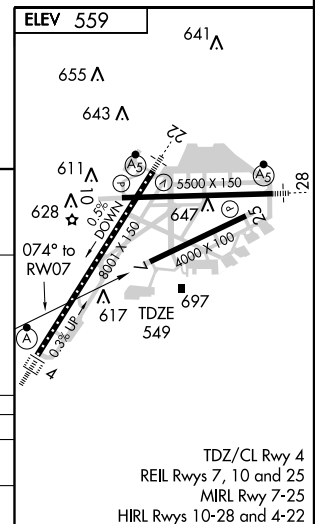
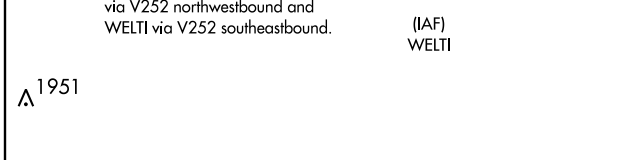
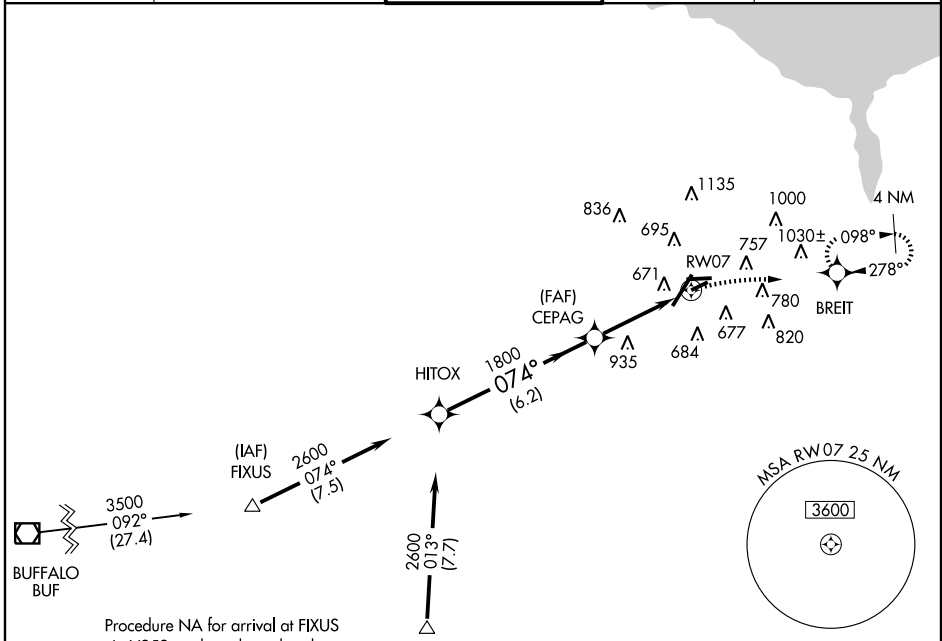
# RNAV (GPS) RWY 7

ROCHESTER / GREATER ROCHESTER INTL (ROC)

APP CRS <b>074°</b>	Rwy Idg TDZE Apt Elev	<b>4000</b> <b>549</b> <b>559</b>
------------------------	-----------------------------	---

<p><b>▽</b> GPS or RNP-0.3 required. <b>△</b> NA DME/DME RNP-0.3 NA. Straight-In minimums NA at night.</p>	<p>MISSED APPROACH: Climbing right turn to 3000 direct BREIT WP and hold.</p>
--	---

ATIS <b>124.825</b>	ROCHESTER APP CON <b>119.55 269.6</b>	ROCHESTER TOWER <b>118.3 254.3</b>	GND CON <b>121.7</b>	CLNC DEL <b>118.8 387.0</b>
------------------------	--	---------------------------------------	-------------------------	--------------------------------



	HITOX	CEPAG	RW07
Procedure Trun NA	2600	1800	3000 BREIT
	6.2 NM		3.9 NM
	074°		2.97° TCH 45

CATEGORY	A	B	C	D
LNAV MDA	1200-1	651 (700-1)	1200-1¾ 651 (700-1¾)	1200-2 651 (700-2)
CIRCLING	1200-1	641 (700-1)	1200-1¾ 641 (700-1¾)	1240-2¼ 681 (700-2¼)

TDZ/CL Rwy 4  
REIL Rwys 7, 10 and 25  
MIRL Rwy 7-25  
HIRL Rwys 10-28 and 4-22

NE-2, 22 OCT 2009 to 19 NOV 2009

NE-2, 22 OCT 2009 to 19 NOV 2009