

ROCHESTER, NEW YORK

AL-351 (FAA)

WAAS CH 45611 W04A	APP CRS 042°	Rwy Idg 8001 TDZE 535 Apt Elev 559
--	------------------------	---

RNAV (GPS) RWY 4

ROCHESTER / GREATER ROCHESTER INTL (ROC)

▼ For inoperative ALSF-2, increase LPV visibility to 1¼ mile all Cats.
▲ For uncompensated Baro-VNAV systems, LNAV/VNAV NA below -16°C (4°F) or above 47°C (116°F). DME/DME RNP-0.3 NA.

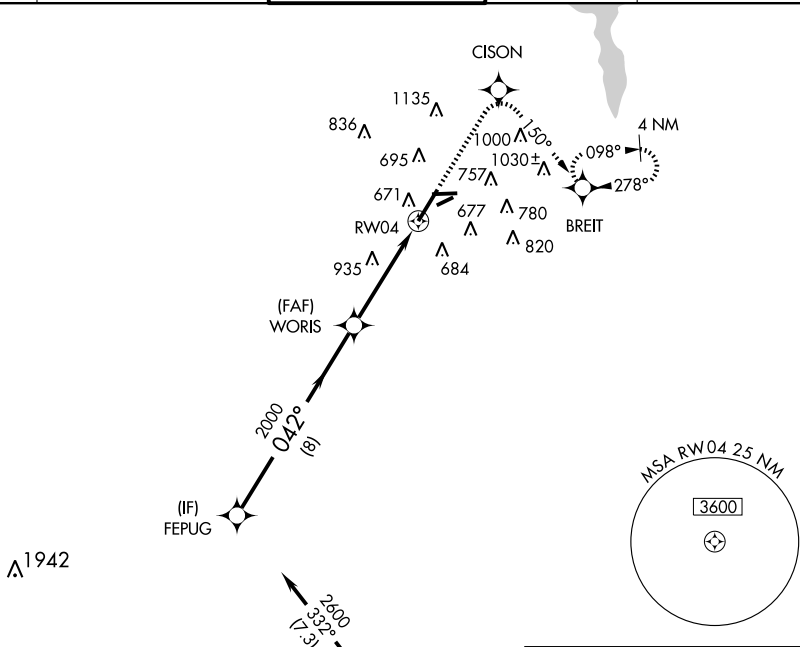


MISSED APPROACH: Climb to 3000 direct CISON and right turn via 150° track to BREIT and hold, continue climb-in-hold to 3000.

ATIS 124.825	ROCHESTER APP CON 119.55 269.6	ROCHESTER TOWER 118.3 254.3	GND CON 121.7	CLNC DEL 118.8 387.0
------------------------	--	---------------------------------------	-------------------------	--------------------------------

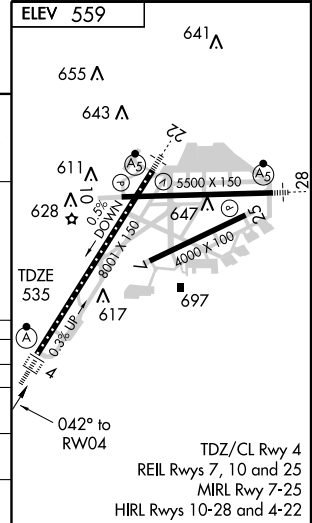
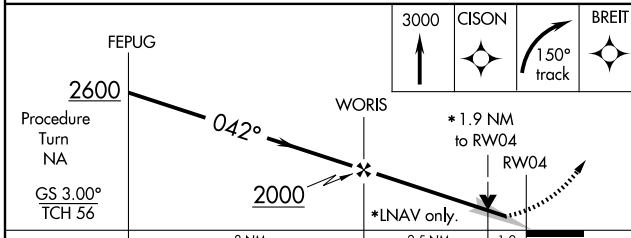
NE-2, 22 OCT 2009 to 19 NOV 2009

NE-2, 22 OCT 2009 to 19 NOV 2009



Procedure NA for arrivals at GEE VOR/DME via airway radials 287 CW 018.

ELEV 559	641 Δ
----------	--------------



CATEGORY	A	B	C	D
LPV DA		866/40	331 (400-¾)	
LNAV/DA VNAV		1321-2¼	786 (800-2¼)	
LNAV MDA	1200/24	665 (700-½)	1200/60 665 (700-1¼)	1200-1½ 665 (700-1½)
CIRCLING	1200-1	641 (700-1)	1200-1¾ 641 (700-1¾)	1240-2¼ 681 (700-2¼)

TDZ/CL Rwy 4
REIL Rws 7, 10 and 25
MIRL Rwy 7-25
HIRL Rws 10-28 and 4-22

ROCHESTER, NEW YORK
Amdt 1A 09211

43°07'N - 77°40'W

ROCHESTER / GREATER ROCHESTER INTL (ROC)

RNAV (GPS) RWY 4