

RNAV (GPS) RWY 10

ROCHESTER / GREATER ROCHESTER INTL (ROC)

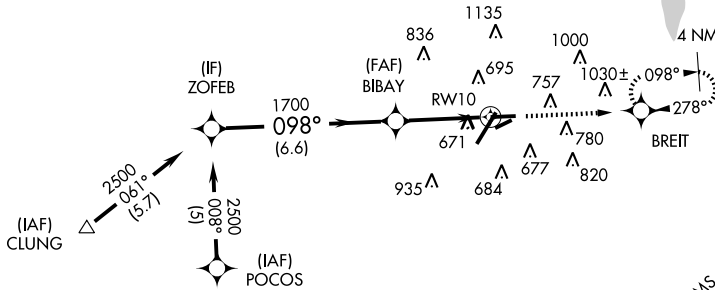
APP CRS 098°	Rwy Idg TDZE Apt Elev	5500 556 559
------------------------	-----------------------------	---

<p>▼ GPS or RNP-0.3 required.</p> <p>▲ NA DME/DME RNP-0.3 NA.</p>	<p>MISSED APPROACH: Climb to 3000 direct BREIT WP and hold.</p>
---	---

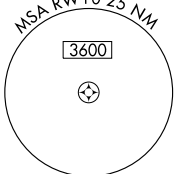
<p>ATIS 124.825</p>	<p>ROCHESTER APP CON 119.55 269.6</p>	<p>ROCHESTER TOWER 118.3 254.3</p>	<p>GND CON 121.7</p>	<p>CLNC DEL 118.8 387.0</p>
--------------------------------	--	---	---------------------------------	--

NE-2, 22 OCT 2009 to 19 NOV 2009

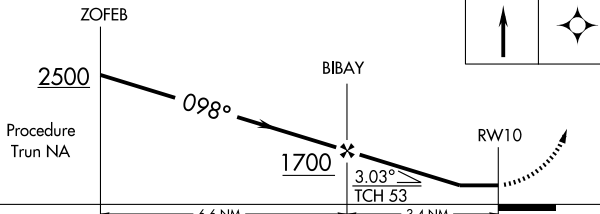
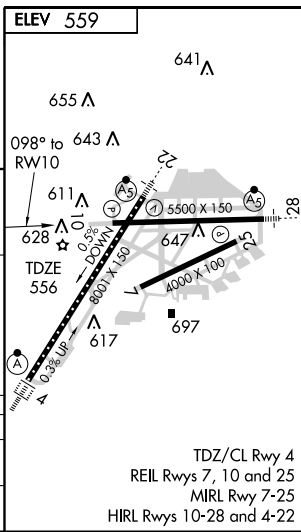
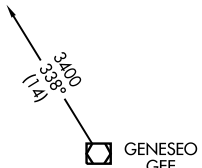
NE-2, 22 OCT 2009 to 19 NOV 2009



Procedure NA for arrival at CLUNG on V2 southwestbound.



▲ 1942



CATEGORY	A	B	C	D
LNAV MDA	960-1	404 (500-1)	960-1¼	404 (500-1¼)
CIRCLING	1060-1	501 (600-1)	1060-1½ 501 (600-1½)	1240-2¼ 681 (700-2¼)

TDZ/CL Rwy 4
REIL Rws 7, 10 and 25
MIRL Rwy 7-25
HIRL Rws 10-28 and 4-22

RNAV (GPS) RWY 10