


ILS or LOC RWY 22

ROCHESTER / GREATER ROCHESTER INTL (ROC)

LOC I-MWD 110.7	APP CRS 222°	Rwy Ldg 8001
		TDZE 559
		Apt Elev 559

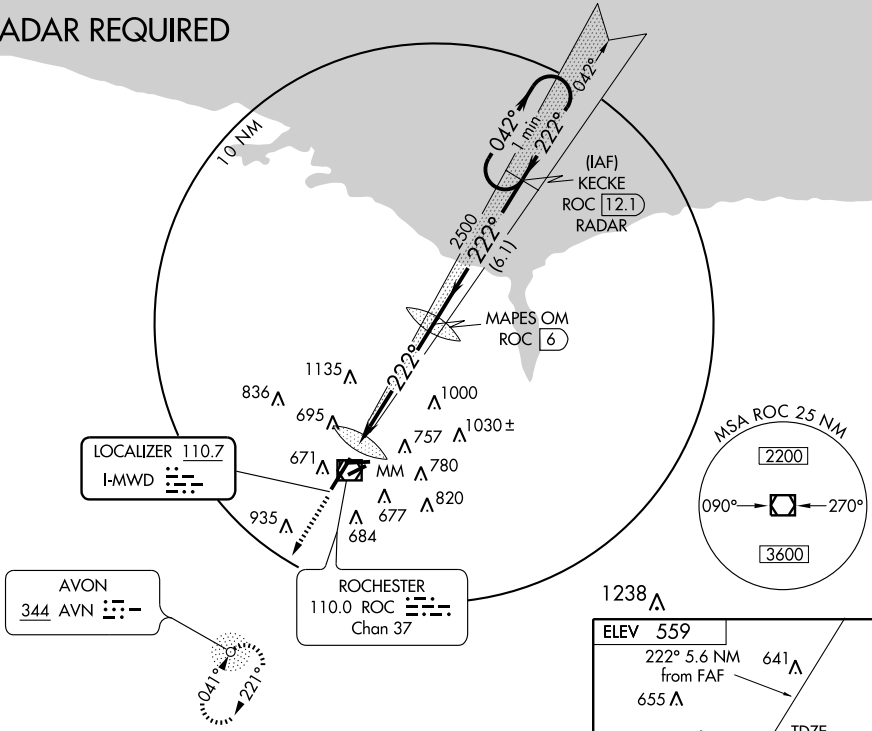
ADF REQUIRED.
 When R-5203 active in lieu not authorized.
 *RVR 1800 authorized with the use of FD or AP or HUD to DA.

MALSR

 MISSED APPROACH: Climb to 3000 direct AVN NDB and hold.

ATIS 124.825	ROCHESTER APP CON 119.55 269.6	ROCHESTER TOWER 118.3 254.3	GND CON 121.7	CLNC DEL 118.8 387.0
------------------------	--	---------------------------------------	-------------------------	--------------------------------

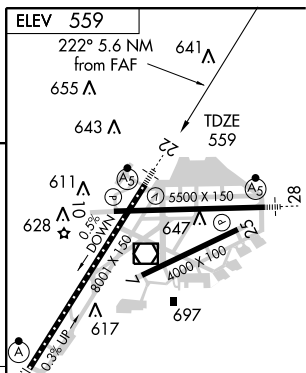
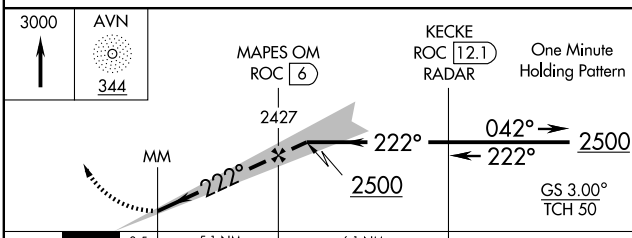
R-5203

RADAR REQUIRED



NE-2, 22 OCT 2009 to 19 NOV 2009

NE-2, 22 OCT 2009 to 19 NOV 2009



CATEGORY	A	B	C	D
S-ILS 22	* 759/24 200 (200-½)			
S-LOC 22	1000/24 441 (500-½)	1000/40 441 (500-¾)	1000/50 441 (500-1)	
CIRCLING	1060-1 501 (600-1)	1060-1½ 501 (600-1½)	1240-2¼ 681 (700-2¼)	

TDZ/CL Rwy 4
 REIL Rws 7, 10 and 25
 MIRL Rwy 7-25
 HIRL Rws 10-28 and 4-22

FAF to MAP 5.6 NM					
Knots	60	90	120	150	180
Min:Sec	5:36	3:44	2:48	2:14	1:52