

ROANOKE, VIRGINIA

AL-349 (FAA)

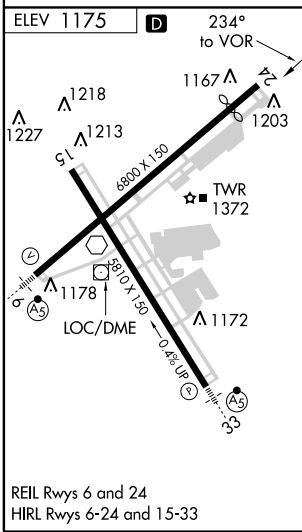
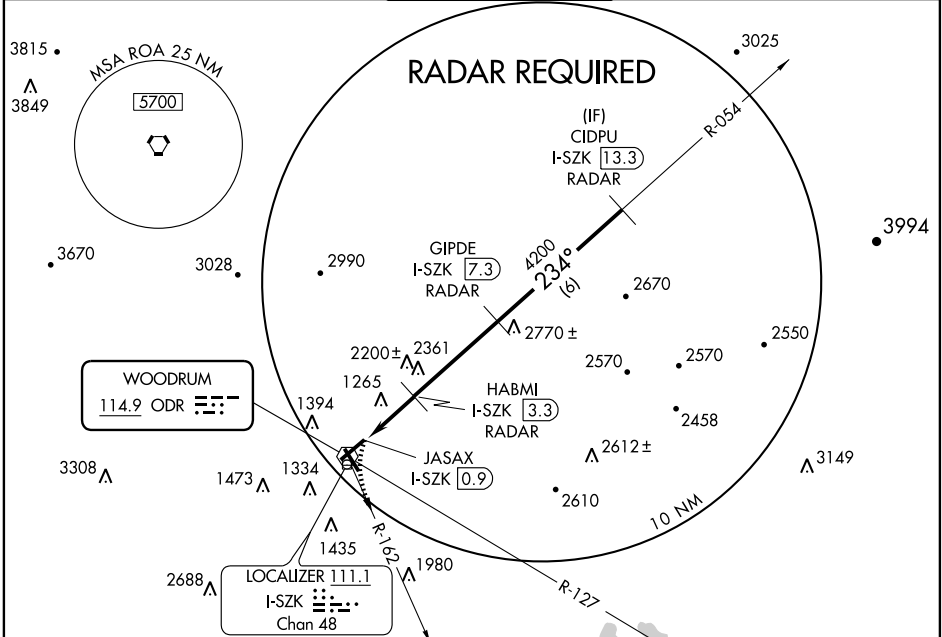
VOR ODR <b>114.9</b>	APP CRS <b>234°</b>	Rwy ldg TDZE Apt Elev <b>N/A</b> <b>N/A</b> <b>1175</b>
-------------------------	------------------------	--

**VOR/DME-A**  
ROANOKE RGNL/WOODRUM FIELD (ROA)

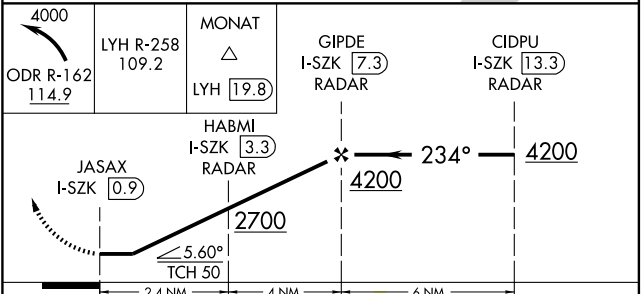
Simultaneous reception of ODR VOR and I-SZK DME required.  
DME from I-SZK LDA.  
Circling NA northwest of Rwy 6-24. Circling to Rwy 15 NA.

MISSED APPROACH: Climbing left turn to 4000 via ODR VOR R-162 and LYH VORTAC R-258 to MONAT/LYH 19.8 DME and hold.

ATIS <b>134.95</b>	ROANOKE APP CON <b>126.9 339.8</b>	ROANOKE TOWER <b>118.3 257.8</b>	GND CON <b>121.9 257.8</b>	CLNC DEL <b>119.7</b>
-----------------------	---------------------------------------	-------------------------------------	-------------------------------	--------------------------



4000	LYH R-258 109.2	MONAT LYH [19.8]	GIPDE I-SZK [7.3] RADAR	CIDPU I-SZK [13.3] RADAR
------	--------------------	---------------------	-------------------------------	--------------------------------



CATEGORY	A	B	C	D
CIRCLING	1760-1	585 (600-1)	1760-1½ 585 (600-1½)	1780-2 605 (700-2)

ROANOKE, VIRGINIA  
Amdt 6 09127

37°20'N - 79°59'W

ROANOKE RGNL/WOODRUM FIELD (ROA)  
**VOR/DME-A**

NE-3, 22 OCT 2009 to 19 NOV 2009

NE-3, 22 OCT 2009 to 19 NOV 2009