

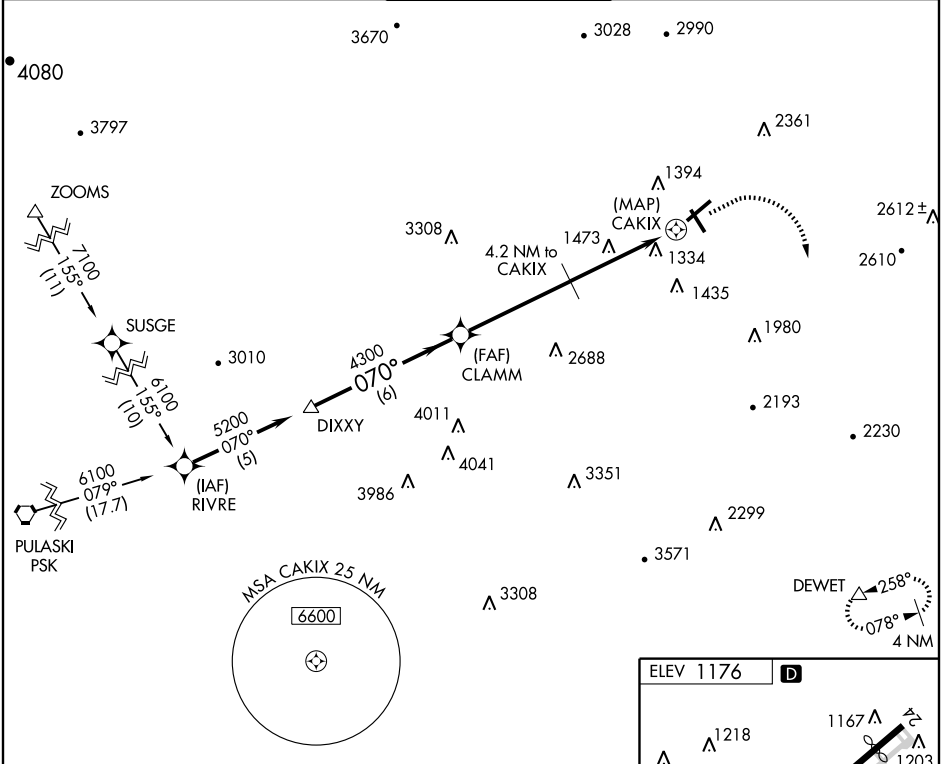
# RNAV (GPS) RWY 6

ROANOKE RGNL/WOODRUM FIELD (ROA)

APP CRS <b>070°</b>	Rwy Idg <b>6800</b>
	TDZE <b>1176</b>
	Apt Elev <b>1176</b>

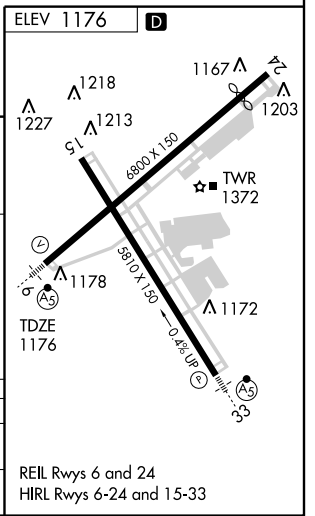
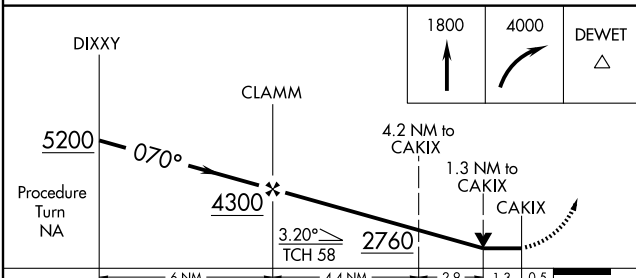
<p><b>NA</b> Circling to Rwy 15 is NA. Circling NA northwest Rwy 6-24. For inoperative MALSR, increase LNAV MDA Cat A and B visibility to 1 mile. GPS or RNP-0.3 required. DME/DME RNP-0.3 NA.</p>	<p><b>MALSR</b> </p>	<p><b>MISSED APPROACH:</b> Climb to 1800, then climbing right turn to 4000 direct DEWET INT and hold.</p>
--	----------------------	---

ATIS <b>134.95</b>	ROANOKE APP CON <b>126.9 339.8</b>	ROANOKE TOWER <b>118.3 257.8</b>	GND CON <b>121.9 257.8</b>	CLNC DEL <b>119.7</b>
-----------------------	---------------------------------------	-------------------------------------	-------------------------------	--------------------------



NE-3, 22 OCT 2009 to 19 NOV 2009

NE-3, 22 OCT 2009 to 19 NOV 2009



CATEGORY	A	B	C	D
LNAV MDA	1780-¾ 604 (700-¾)	1780-1¼ 604 (700-1¼)	1780-2 604 (700-2)	1780-2 604 (700-2)
CIRCLING	1780-1 604 (700-1)	1780-1¾ 604 (700-1¾)	1840-2 664 (700-2)	1840-2 664 (700-2)

REIL Rwy 6 and 24  
HIRL Rwy 6-24 and 15-33