

LOC I-ROA 109.7	APP CRS 334°	Rwy ldg TDZE Apt Elev	5810 1159 1175
---------------------------	------------------------	-----------------------------	---

ILS or LOC RWY 33

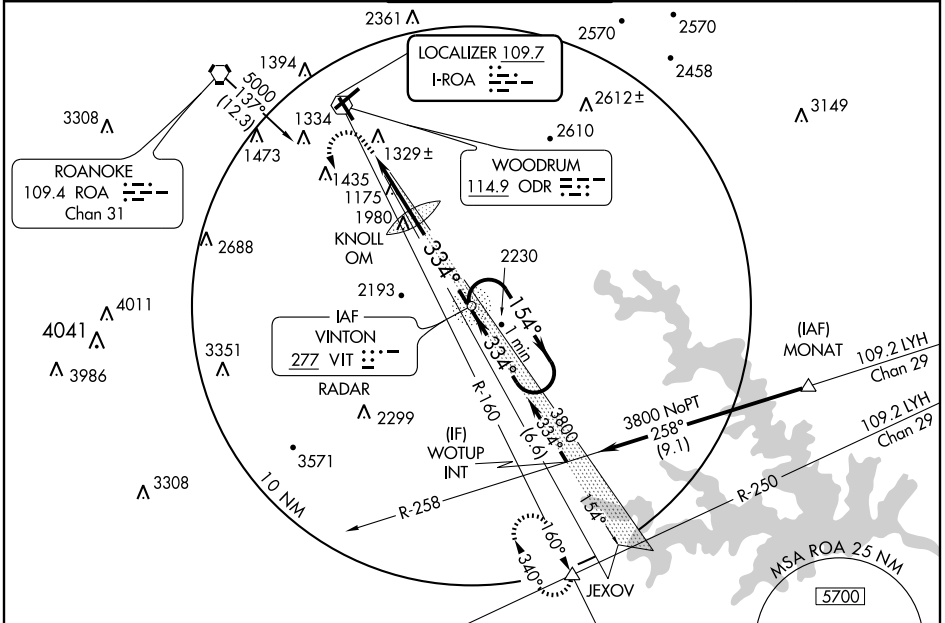
ROANOKE RGNL/WOODRUM FIELD (ROA)

▼ Circling to Rwy 15 NA. Circling NA NW of Rwy 6/24.
▲ ADF or Radar required for S-LOC 33 minimums.
 For inoperative MALS, increase S-ILS 33
 Cats A/B/C visibility to 2 miles, and Cat D to 2 1/4.



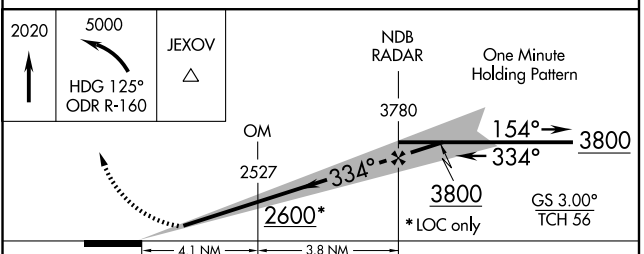
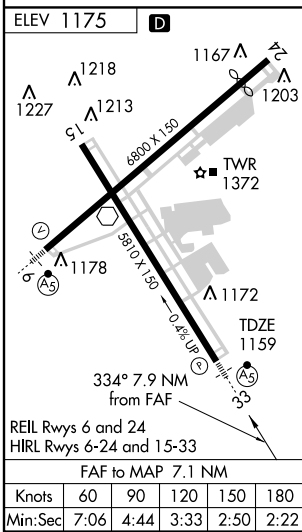
MISSED APPROACH: Climb to 2020 then climbing left turn to 5000 via heading 125° and ODR R-160 to JEXOV INT and hold.

ATIS 134.95	ROANOKE APP CON 126.9 339.8	ROANOKE TOWER 118.3 257.8	GND CON 121.9 257.8	CLNC DEL 119.7
-----------------------	---------------------------------------	-------------------------------------	-------------------------------	--------------------------



NE-3, 22 OCT 2009 to 19 NOV 2009

NE-3, 22 OCT 2009 to 19 NOV 2009



CATEGORY	A	B	C	D
S-ILS 33	1744-1 1/2			1819-1 3/4 660 (700-1 3/4)
S-LOC 33	1940-1/2 781 (800-1/2)	1940-3/4 781 (800-3/4)	1940-1 3/4 781 (800-1 3/4)	1940-2 781 (800-2)
CIRCLING	1940-1 765 (800-1)	1940-1 1/4 765 (800-1 1/4)	1940-2 1/4 765 (800-2 1/4)	1940-2 1/2 765 (800-2 1/2)