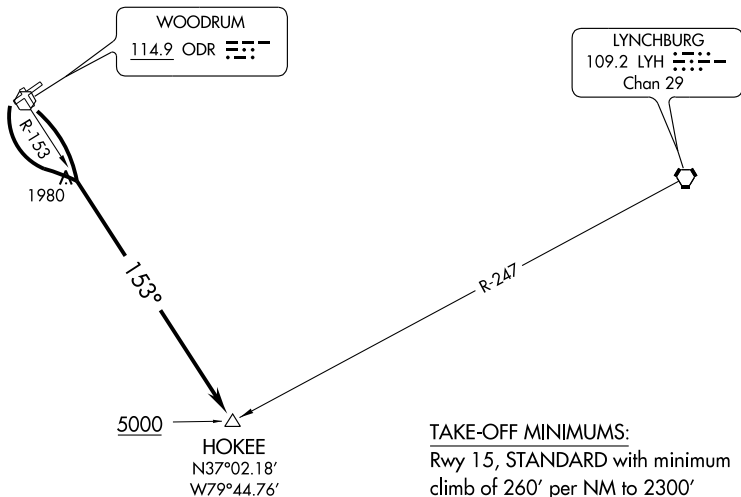


HOKEE ONE DEPARTURE

ROANOKE CLINC DEL
119.7
ROANOKE GND CON
121.9
ROANOKE DEP CON
118.15

TAKE-OFF OBSTACLES:

- Rwy 15: Tree 1.2 NM from DER, 2,122' left of centerline, 60' AGL/1321' MSL.
- Rwy 24: Bush 86' from DER, 385' left of centerline, 4' AGL/1163 MSL.
- Tree 150' from DER, 415' right of centerline, 60' AGL/1171' MSL.
- Tree 737' from DER, 454' right of centerline, 60' AGL/1179' MSL.
- Tree 1164' from DER, 726' right of centerline, 60' AGL/1206' MSL.



TAKE-OFF MINIMUMS:

- Rwy 15, STANDARD with minimum climb of 260' per NM to 2300'
- Rwy 24, STANDARD
- Rwy 6, 33, NA - Obstacles

NE-3, 22 OCT 2009 to 19 NOV 2009

NE-3, 22 OCT 2009 to 19 NOV 2009



DEPARTURE ROUTE DESCRIPTION

RUNWAY 15: Climbing right turn to 5000 via ODR R-153 to HOKEE Int.

RUNWAY 24: Climbing left turn within 2 NM to 5000 to intercept ODR R-153 to HOKEE Int.
Expect radar vectors to filed/assigned route.