

DIXXY FIVE DEPARTURE

SL-349 (FAA)

ROANOKE, VIRGINIA

ROANOKE CLINC DEL
119.7
ROANOKE GND CON
121.9
ROANOKE DEP CON
118.15

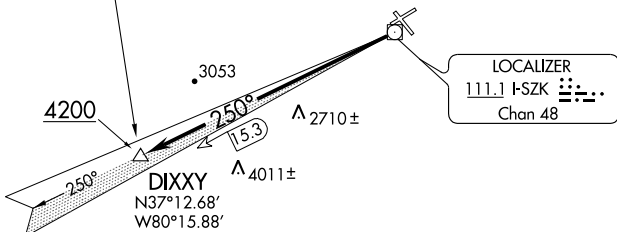


NOTE: Radar Required.

TAKE-OFF MINIMUMS:

Rwy 24, STANDARD with minimum climb of 216' per NM to 2600.

Rwy 6, 15, 33, NA - ATC



TAKE-OFF OBSTACLE NOTES:

- Rwy 24: Bush 86' from DER, 385' left of centerline, 4' AGL/1163' MSL.
- Tree 150' from DER, 415' right of centerline, 60' AGL/1171' MSL.
- Tree 737' from DER, 454' right of centerline, 60' AGL/1179' MSL.
- Tree 1164' from DER, 726' right of centerline, 60' AGL/1206' MSL.

NE-3, 22 OCT 2009 to 19 NOV 2009

NE-3, 22 OCT 2009 to 19 NOV 2009



DEPARTURE ROUTE DESCRIPTION

TAKEOFF RUNWAY 24: Climb west on I-SZK LDA Localizer course to 4200, to DIXXY INT/I-SZK 15.3 DME. Expect radar vectors to filed/assigned route.