

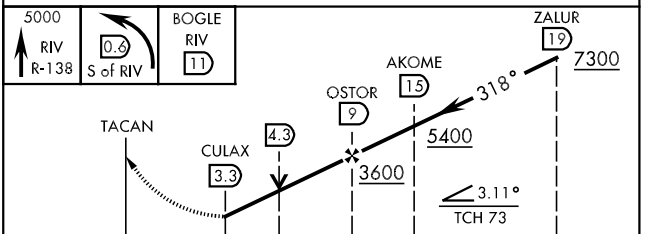
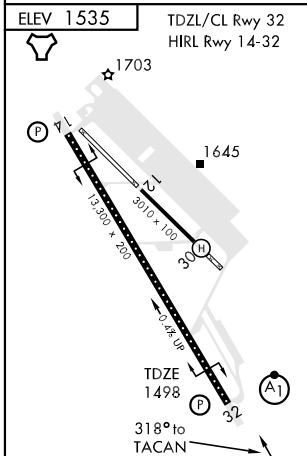
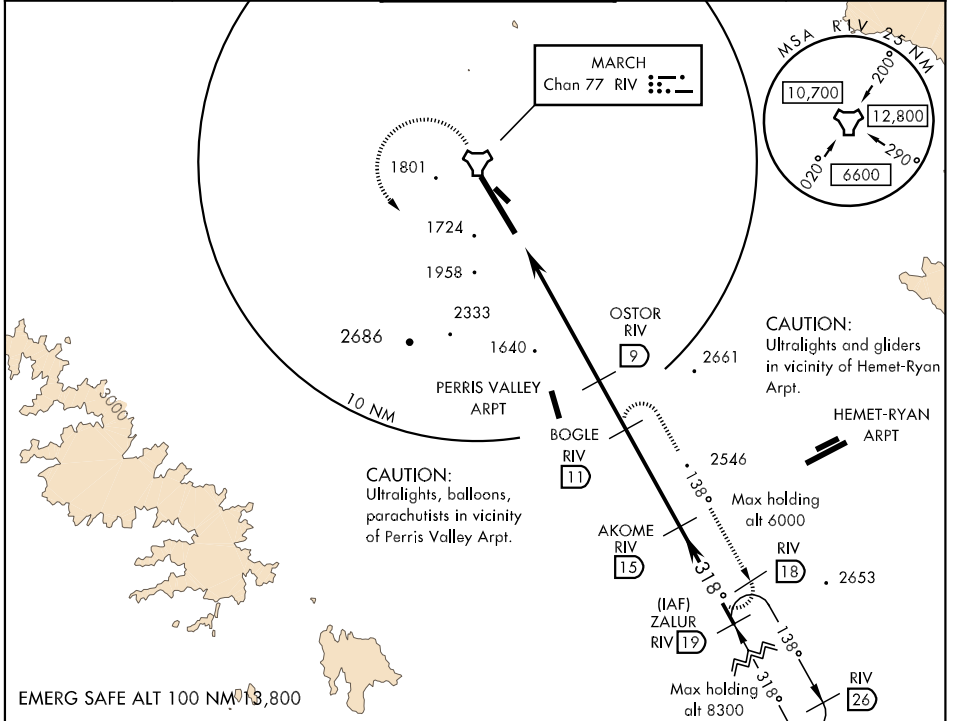
TACAN RIV Chan 77	APCH CRS 318°	Rwy Idg 13,300 TDZE 1498 Arpt Elev 1535	AL-348 [USAF]	MARCH ARB (KRIV)
----------------------	------------------	---	---------------	------------------

*When ALS inop, increase CAT AB RVR to 50 and vis to 1 mile,
 CAT C vis to 1½ miles, CAT D vis to 1¾ and CAT E vis to 2.
 ** Circling not authorized NE of Rwy 14-32.
 Rapid rising terrain.

ALSF-1 (A1)

MISSED APPROACH: Climb on RIV TACAN R-138 to 5000. At 0.6 DME South of RIV, turn left to intercept RIV R-138 direct BOGLE. Continue climb in hold to 5000.

ATIS 134.75 239.05	SOCAL APP CON 134.0 278.3	MARCH TOWER 127.65 253.5	GND CON 121.75 335.8	CLNC DEL 121.75 335.8
-----------------------	------------------------------	-----------------------------	-------------------------	--------------------------



CATEGORY	A	B	C	D	E
S-32 *	2040/24	542 (600-½)	2040/50 542 (600-1)	2040/60 542 (600-1¼)	2040-1½ 542 (600-1½)
CIRCLING **	2180-1 645 (700-1)	2220-1 685 (700-1)	2260-2 725 (800-2)	2260-2¼ 725 (800-2¼)	2800-3 1265 (1300-3)

SW-3, 22 OCT 2009 to 19 NOV 2009

SW-3, 22 OCT 2009 to 19 NOV 2009