

TACAN RIV Chan 77	APCH CRS 106°	Rwy Idg 13,300 TDZE 1535 Arpt Elev 1535
-----------------------------	-------------------------	--

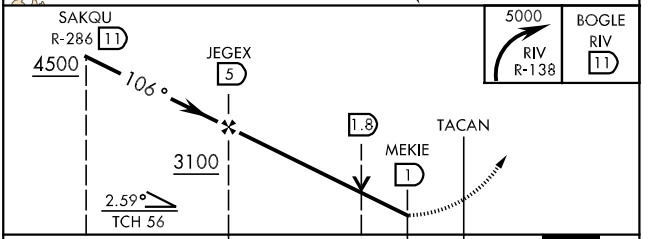
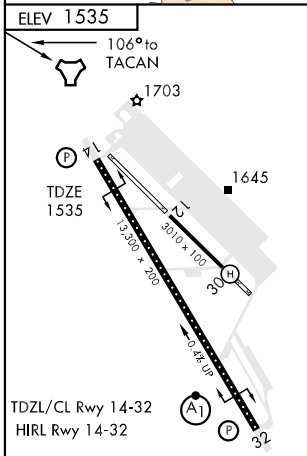
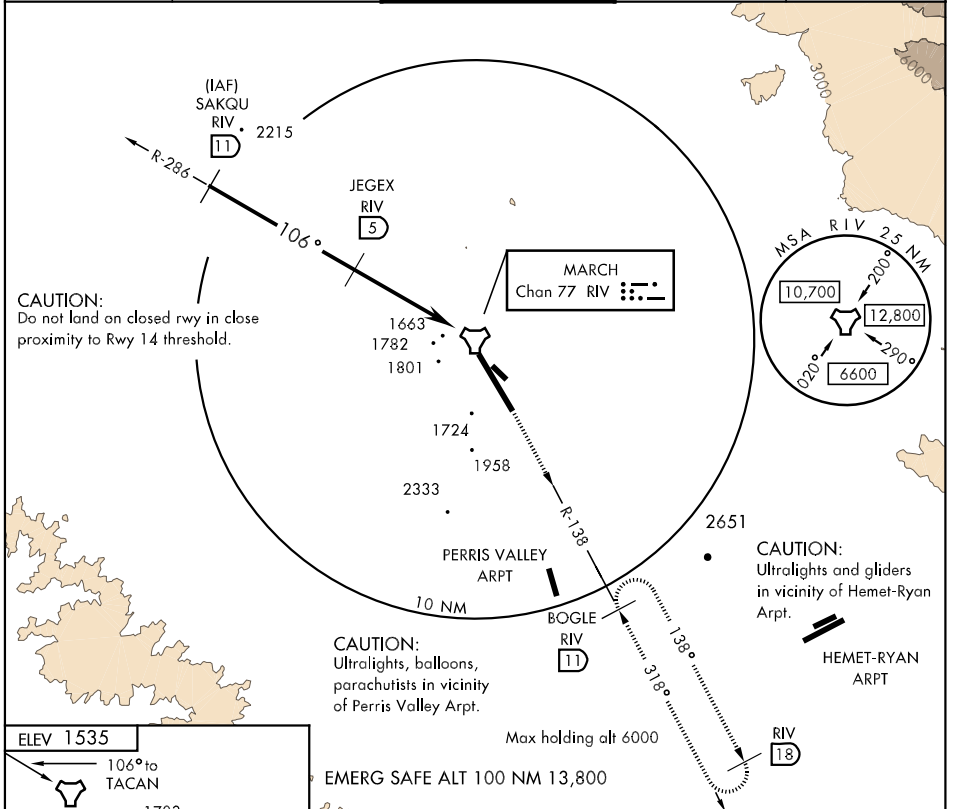
AL-348 [USAF]

MARCH ARB (KRIV)

⚠ * Circling not authorized NE of Rwy 14-32.
Rapid rising terrain.

MISSED APPROACH: Climb out RIV TACAN R-138
direct BOGLE, continue climb in hold to 5000.

ATIS 134.75 239.05	SOCAL APP CON 134.0 278.3	MARCH TOWER 127.65 253.5	GND CON 121.75 335.8	CLNC DEL 121.75 335.8
------------------------------	-------------------------------------	------------------------------------	--------------------------------	---------------------------------



CATEGORY	A	B	C	D	E
S-14	2200-2	665	(700-2)		2200-2½ 665 (700-2½)
CIRCLING *	2200-2 665 (700-2)	2220-2 685 (700-2)	2260-2 725 (800-2)	2260-2½ 725 (800-2½)	2800-3 1265 (1300-3)

SW-3, 22 OCT 2009 to 19 NOV 2009

SW-3, 22 OCT 2009 to 19 NOV 2009