

LOC I-RIV 110.1	APCH CRS 315°	Rwy Idg 13,300 TDZE 1498 Arpt Elev 1535
---------------------------	-------------------------	--

AL-348 [USAF]

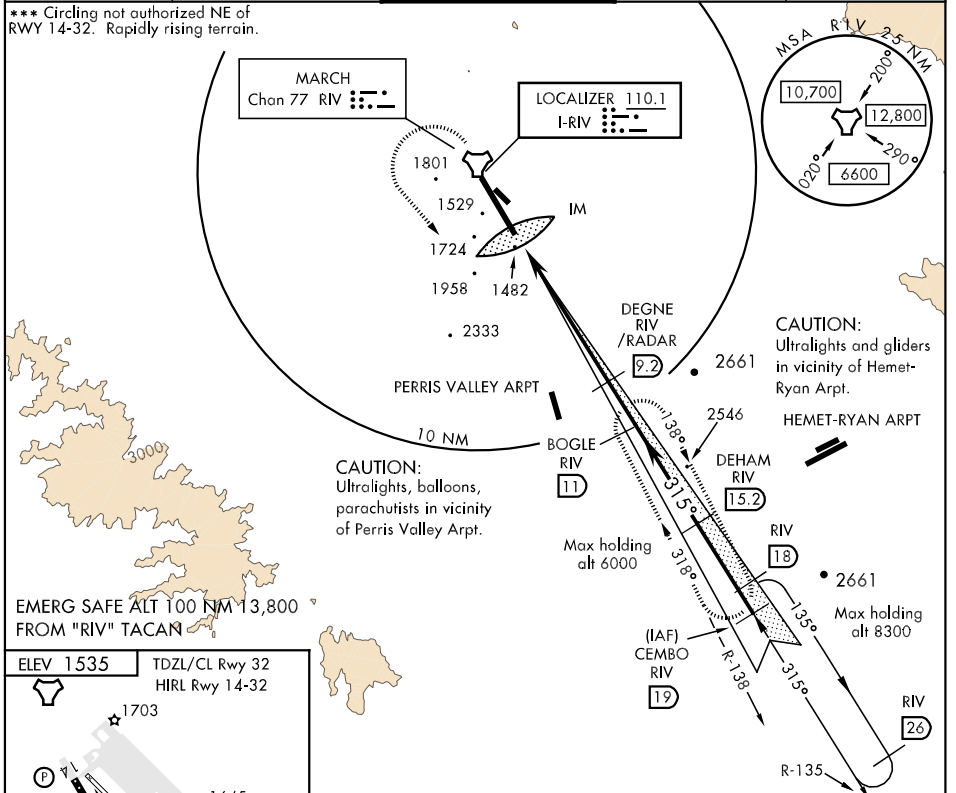
MARCH ARB (KRIV)

▼ * When ALS inop, increase CAT A-E RVR to 40 and vis to 3/4 mile.
 ** When ALS inop, increase CAT AB RVR to 50 and vis to 1 mile, CAT CD RVR to 60 and vis to 1 1/4 mile, CAT E vis to 1 1/2 mile.

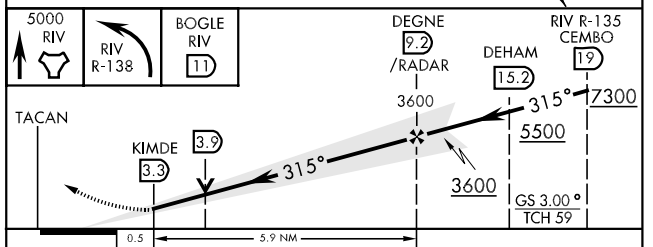
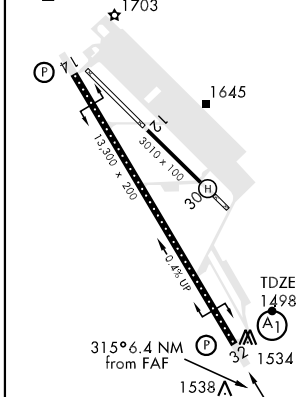


MISSED APPROACH: Climb direct RIV TACAN, then turn left to intercept RIV R-138 direct BOGLE, continue climb in hold to 5000.

ATIS 134.75 239.05	SOCAL APP CON 134.0 278.3	MARCH TOWER 127.65 253.5	GND CON 121.75 335.8	CLNC DEL 121.75 335.8
------------------------------	-------------------------------------	------------------------------------	--------------------------------	---------------------------------



ELEV 1535	TDZL/CL Rwy 32
	HIRL Rwy 14-32



CATEGORY	A	B	C	D	E
S-ILS 32 *	1698/18 200 (200-1/2)		1698/24 200 (200-1/2)		
S-LOC 32 **	1920/24 422 (400-1/2)		1920/40 422 (400-3/4)		1920/50 422 (400-1)
CIRCLING ***	2180-1 645 (700-1)	2220-1 685 (700-1)	2260-2 725 (800-2)	2260-2 1/4 725 (800-2 1/4)	2800-3 1265 (1300-3)

SW-3, 22 OCT 2009 to 19 NOV 2009

SW-3, 22 OCT 2009 to 19 NOV 2009