

TACAN RIV Chan 77	APCH CRS 318°	Rwy Idg 13,300 TDZE 1498 Arpt Elev 1535
----------------------	------------------	-----------------------------------------------

JAL-348 [USAF]

MARCH ARB (KRIV)

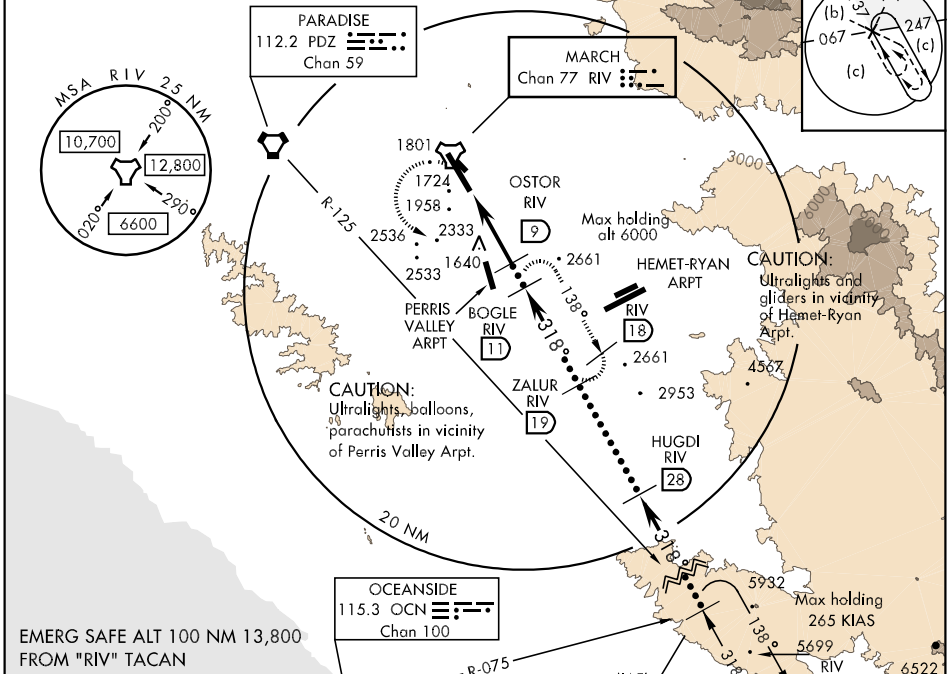
* When ALS inop, increase CAT C vis to 1½ miles
CAT D vis to 1¾ miles and CAT E vis to 2.



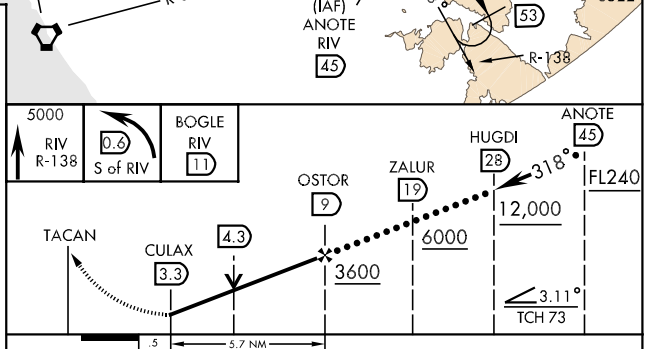
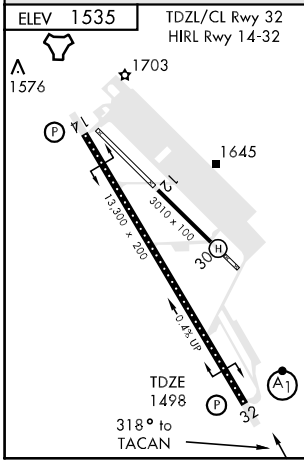
MISSED APPROACH: Climb on RIV TACAN R-138 to 5000. At .6 DME South of RIV, turn left to intercept RIV R-138 direct BOGLE continue climb in hold to 5000.

ATIS 134.75 239.05	SOCAL APP CON 134.0 278.3	MARCH TOWER 127.65 253.5	GND CON 121.75 335.8	CLNC DEL 121.75 335.8
-----------------------	------------------------------	-----------------------------	-------------------------	--------------------------

** Circling not authorized NE of Rwy 14-32.
Rapid rising terrain.



EMERG SAFE ALT 100 NM 13,800
FROM "RIV" TACAN



CATEGORY	C	D	E
S-32 *	2040/50 542 (600-1)	2040/60 542 (600-1½)	2040-1½ 542 (600-1½)
CIRCLING **	2260-2 725 (800-2)	2260-2¼ 725 (800-2¼)	2800-3 1265 (1300-3)

SW-3, 22 OCT 2009 to 19 NOV 2009

SW-3, 22 OCT 2009 to 19 NOV 2009