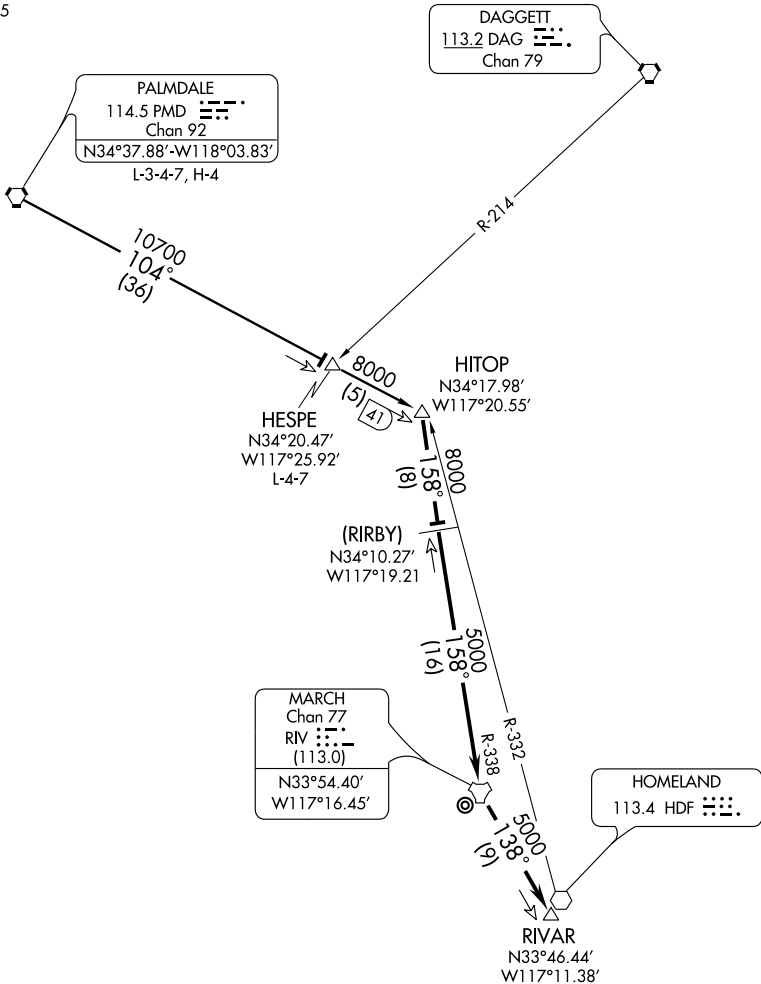


HITOP ONE ARRIVAL

ATIS *239.05



NOTE: TACAN equipped aircraft only.

NOTE: Chart not to scale.

HESPE TRANSITION (HESPE.HITOP1): From over HESPE INT via PMD R-104 to HITOP INT. Thence

PALMDALE TRANSITION (PMD.HITOP1): From over PMD VORTAC via PMD R-104 to HITOP INT. Thence

. . . . From over HITOP INT via RIV R-338 to RIV TACAN. Thence via RIV R-138 to RIVAR DME. Expect radar vectors to final approach course.

HITOP ONE ARRIVAL

SW-3, 22 OCT 2009 to 19 NOV 2009

SW-3, 22 OCT 2009 to 19 NOV 2009