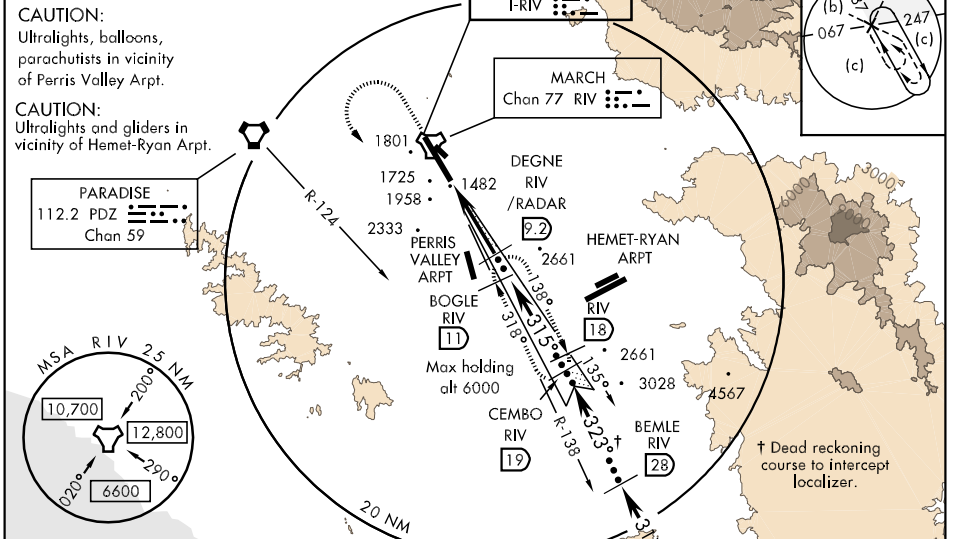


LOC I-RIV <b>110.1</b>	APCH CRS <b>315°</b>	Rwy Idg <b>13,300</b> TDZE <b>1498</b> Arpt Elev <b>1535</b>	JAL-348 [USAF]	MARCH ARB (KRIV)
---------------------------	-------------------------	--	----------------	------------------

**▼** \* When ALS inop, increase CAT CDE RVR to 40 and vis to ¾ mile.  
 \*\* When ALS inop, increase CAT CD RVR to 60 and vis to 1 ¼ mile, CAT E vis to 1½.  
 ALSF-1 MISSED APPROACH: Climb direct RIV TACAN. Then turn left to intercept RIV R-138 direct BOGLE, continue climb in hold to 5000.

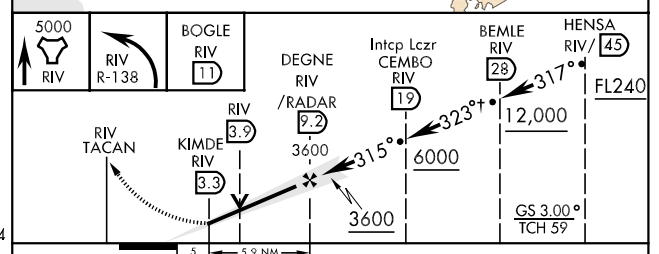
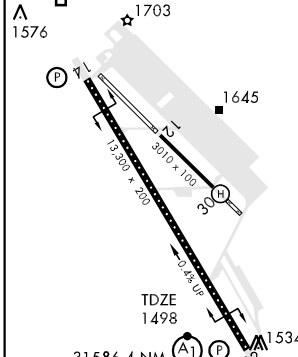
ATIS <b>134.75 239.05</b>	SOCAL APP CON <b>134.0 278.3</b>	MARCH TOWER <b>127.65 253.5</b>	GND CON <b>121.75 335.8</b>	CLNC DEL <b>121.75 335.8</b>
------------------------------	-------------------------------------	------------------------------------	--------------------------------	---------------------------------

\*\*\* Circling not authorized NE of Rwy 14-32. Rapid rising terrain.



EMERG SAFE ALT 100 NM 13,800 FROM "RIV" TACAN

ELEV <b>1535</b>	TDZL/CL Rwy 32 HIRL Rwy 14-32
------------------	----------------------------------



CATEGORY		C	D	E
S-ILS 32*		1698/24		200 (200-½)
S-LOC 32**		1920/40	422 (400-¾)	1920/50 422 (400-1)
CIRCLING***		2260-2 (800-2)	2260-2¼ (800-2¼)	2800-3 (1300-3)

SW-3, 22 OCT 2009 to 19 NOV 2009

SW-3, 22 OCT 2009 to 19 NOV 2009