

VORTAC RIC 114.1 Chan 88	APP CRS 254°	Rwy Idg TDZE Apt Elev	5326 160 167
--	------------------------	-----------------------------	---

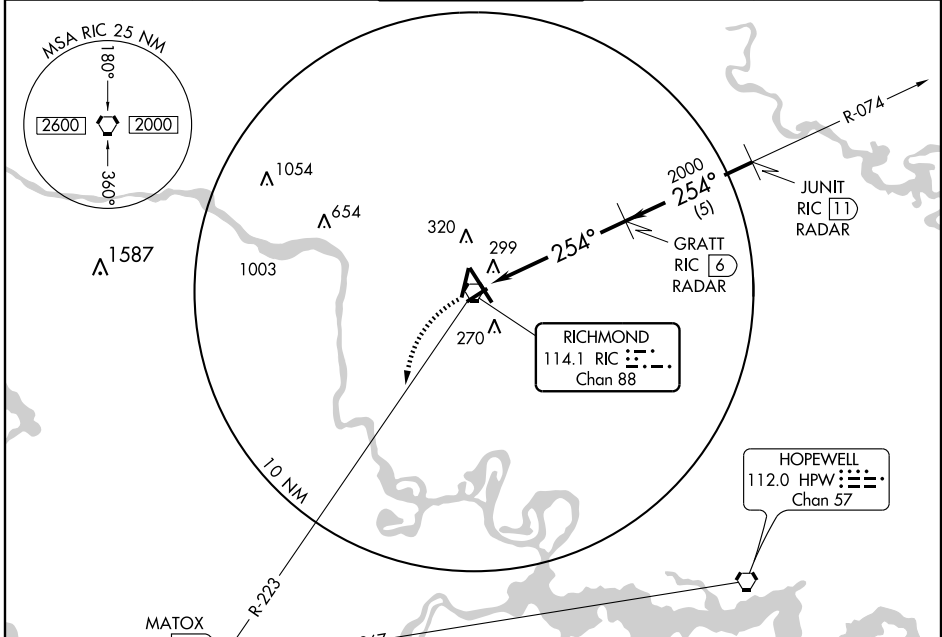
VOR RWY 25

RICHMOND INTL (RIC)

▼ DME or RADAR REQUIRED

MISSED APPROACH: Climbing left turn to 2000 via RIC R-223 to MATOX INT and hold.

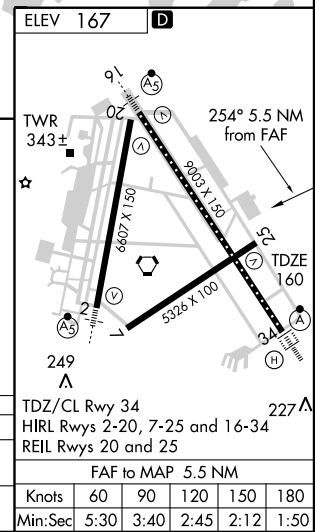
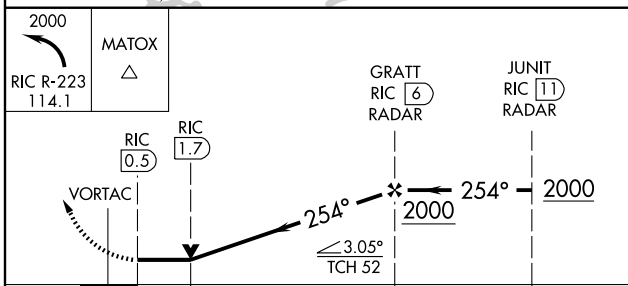
ATIS 119.15 263.025	POTOMAC APP CON 134.7 307.2	RICHMOND TOWER 121.1 257.8	GND CON 121.9 348.6	CLNC DEL 127.55 348.6
-------------------------------	---------------------------------------	---	-------------------------------	---------------------------------



NE-3, 22 OCT 2009 to 19 NOV 2009

NE-3, 22 OCT 2009 to 19 NOV 2009

RADAR REQUIRED



CATEGORY	A	B	C	D
S-25	600-1 440 (500-1)	600-1½ 440 (500-1½)	600-1½ 440 (500-1½)	600-1½ 440 (500-1½)
CIRCLING	660-1 493 (500-1)	660-1½ 493 (500-1½)	660-1½ 493 (500-1½)	720-2 553 (600-2)

FAF to MAP 5.5 NM					
Knots	60	90	120	150	180
Min:Sec	5:30	3:40	2:45	2:12	1:50