


# VOR RWY 2

RICHMOND INTL (RIC)

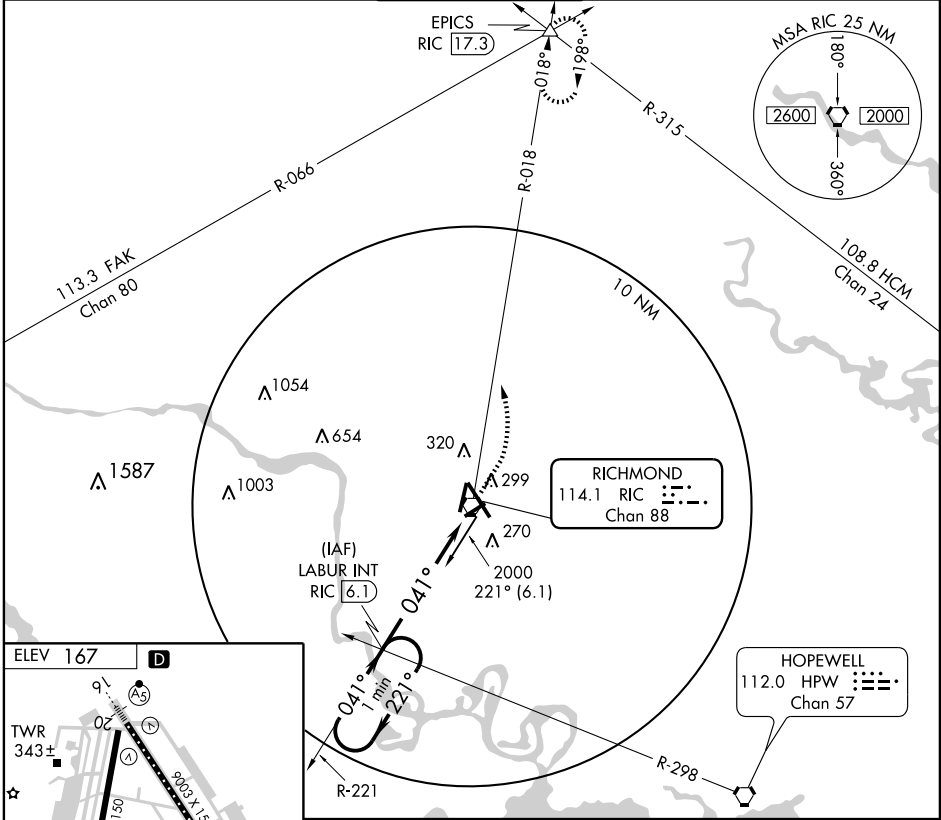
VORTAC RIC <b>114.1</b> Chan <b>88</b>	APP CRS <b>041°</b>	Rwy Idg TDZE <b>161</b> Apt Elev <b>167</b>	<b>6607</b>
--	------------------------	---	-------------

**▼** Inoperative table does not apply.

**MALSR** 

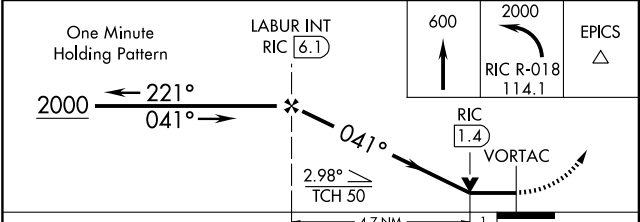
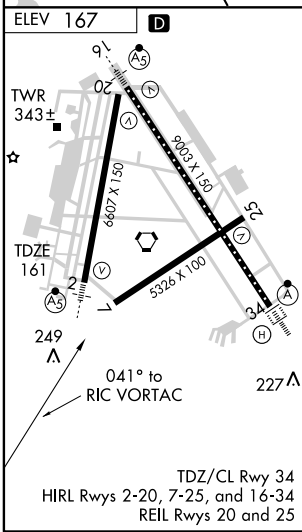
**MISSED APPROACH:** Climb to 600 then climbing left turn to 2000 via RIC R-018 to EPICS INT and hold.

ATIS <b>119.15 263.025</b>	POTOMAC APP CON <b>134.7 307.2</b>	<b>RICHMOND TOWER</b> <b>121.1 257.8</b>	GND CON <b>121.9 348.6</b>	CLNC DEL <b>127.55 348.6</b>
-------------------------------	---------------------------------------	---	-------------------------------	---------------------------------



NE-3, 22 OCT 2009 to 19 NOV 2009

NE-3, 22 OCT 2009 to 19 NOV 2009



CATEGORY	A	B	C	D
S-2	540-1	379 (400-1)		540-1¼ 379 (400-1¼)
CIRCLING	660-1	493 (500-1)	660-1½ 493 (500-1½)	720-2 553 (600-2)