

# RNAV (GPS) RWY 7

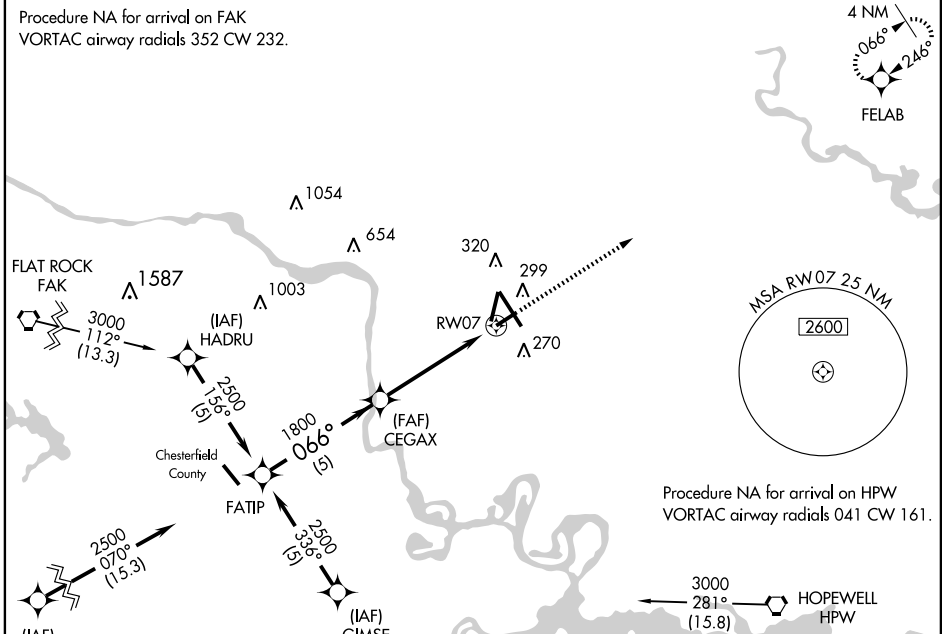
RICHMOND INTL (RIC)

APP CRS <b>066°</b>	Rwy Idg <b>5326</b>
	TDZE <b>158</b>
	Apt Elev <b>167</b>

<p>▼ Straight in minimums NA at night. GPS or RNP-0.3 required. ▲ NA DME/DME RNP-0.3 NA.</p>	<p>MISSED APPROACH: Climb to 3000 direct FELAB WP and hold.</p>
--	---

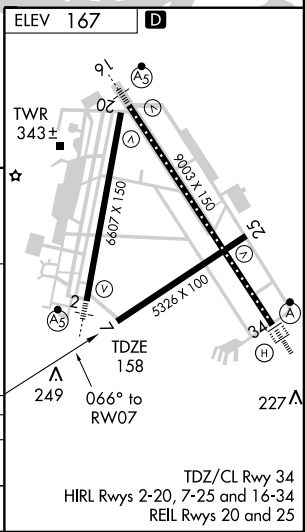
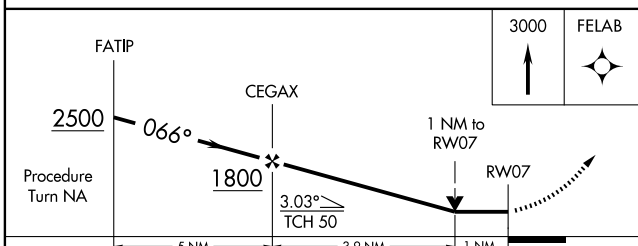
<p>ATIS <b>119.15 263.025</b></p>	<p>POTOMAC APP CON <b>134.7 307.2</b></p>	<p>RICHMOND TOWER <b>121.1 257.8</b></p>	<p>GND CON <b>121.9 348.6</b></p>	<p>CLNC DEL <b>127.55 348.6</b></p>
---------------------------------------	---	--	---------------------------------------	---

Procedure NA for arrival on FAK  
VORTAC airway radials 352 CW 232.



NE-3, 22 OCT 2009 to 19 NOV 2009

NE-3, 22 OCT 2009 to 19 NOV 2009



CATEGORY	A	B	C	D
RNAV MDA	540-1 382 (400-1)		540-1½ 382 (400-1½)	
CIRCLING	660-1	493 (500-1)	660-1½ 493 (500-1½)	720-2 553 (600-2)