

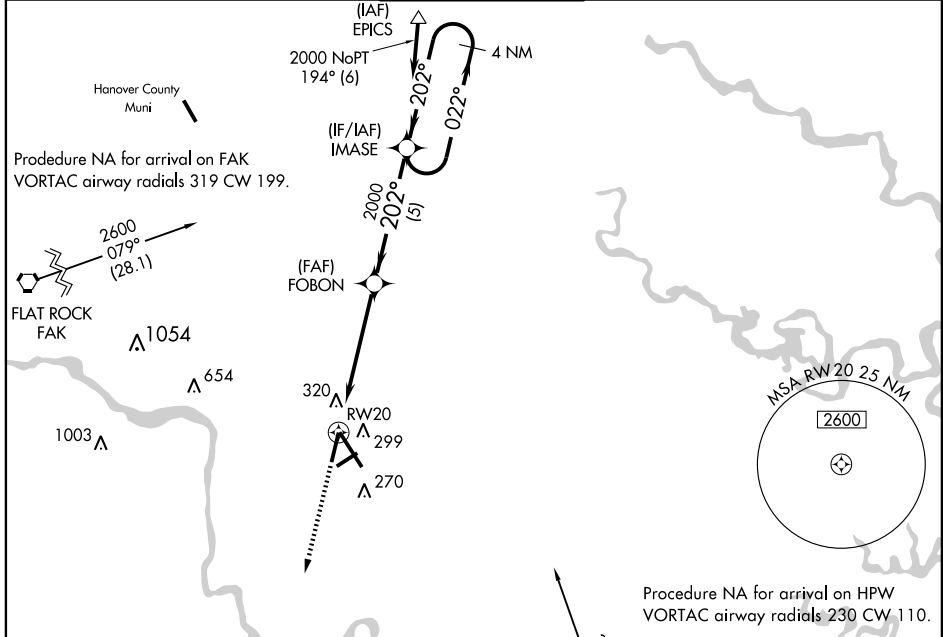
RNAV (GPS) RWY 20

RICHMOND INTL (RIC)

APP CRS	Rwy Idg	6607
202°	TDZE	167
	Apt Elev	167

<p>▽ GPS or RNP-0.3 required.</p> <p>△ NA</p>	<p>GPS or RNP-0.3 required.</p> <p>DME/DME RNP-0.3 NA.</p>	<p>MISSED APPROACH: Climb to 2000 direct CASEE WP and hold.</p>
---	--	---

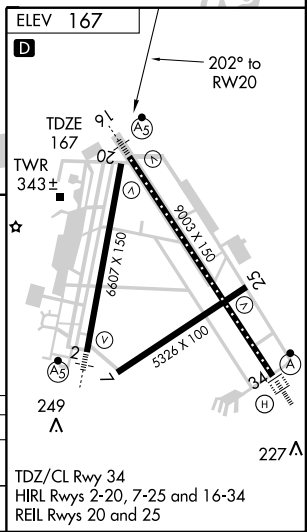
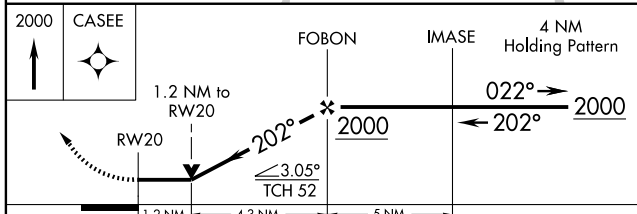
<p>ATIS</p> <p>119.15 263.025</p>	<p>POTOMAC APP CON</p> <p>134.7 307.2</p>	<p>RICHMOND TOWER</p> <p>121.1 257.8</p>	<p>GND CON</p> <p>121.9 348.6</p>	<p>CLNC DEL</p> <p>127.55 348.6</p>
--	--	---	--	--



NE-3, 22 OCT 2009 to 19 NOV 2009

NE-3, 22 OCT 2009 to 19 NOV 2009

Procedure NA for arrival on HPW
VORTAC airway radials 230 CW 110.



CATEGORY	A	B	C	D
LNVA MDA	600-1	433 (500-1)	600-1½ 433 (500-1½)	600-1½ 433 (500-1½)
CIRCLING	660-1	493 (500-1)	660-1½ 493 (500-1½)	720-2 553 (600-2)