

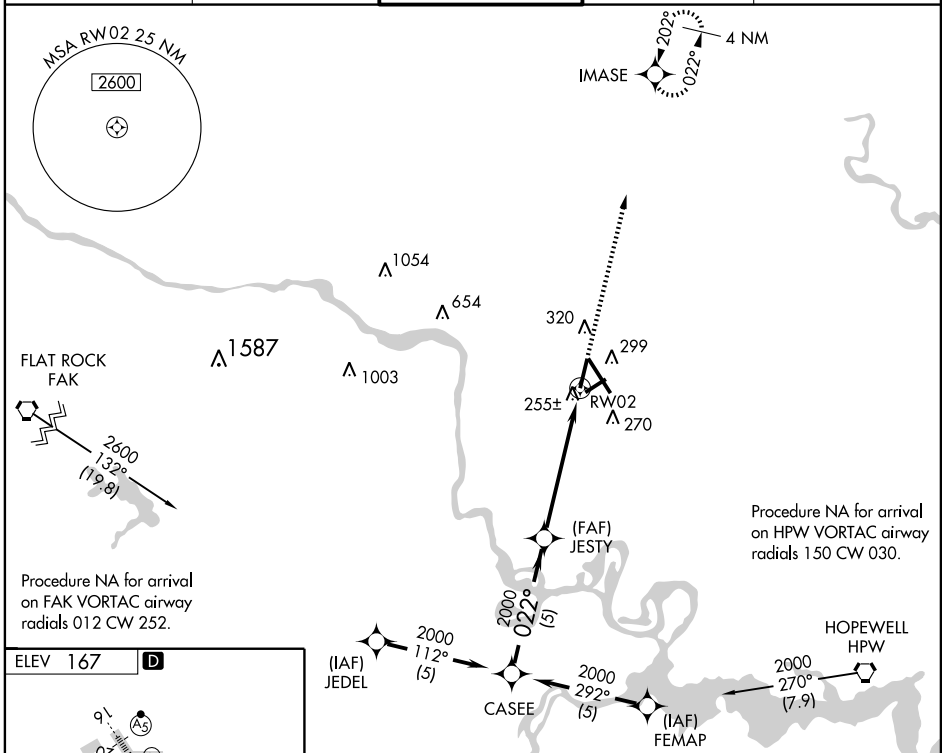
RNAV (GPS) RWY 2

RICHMOND INTL (RIC)

APP CRS 022°	Rwy Idg 6607
	TDZE 161
	Apt Elev 167

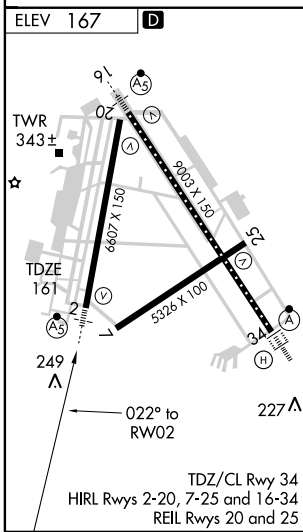
<p>▽ For inoperative MALSR, increase LNAV Cats A and B visibility to 1. Baro-VNAV NA below -15°C (5°F). △ NA GPS or RNP-0.3 required. DME/DME RNP-0.3 NA.</p>	<p>MALSR</p>	<p>MISSED APPROACH: Climb to 2000 direct IMASE WP and hold.</p>
--	---------------------	--

<p>ATIS 119.15 263.025</p>	<p>POTOMAC APP CON 134.7 307.2</p>	<p>RICHMOND TOWER 121.1 257.8</p>	<p>GND CON 121.9 348.6</p>	<p>CLNC DEL 127.55 348.6</p>
---------------------------------------	---	--	---------------------------------------	---



NE-3, 22 OCT 2009 to 19 NOV 2009

NE-3, 22 OCT 2009 to 19 NOV 2009



<p>Procedure Turn NA</p> <p>2000 — 022° — 2000</p> <p>GS 3.00° TCH 50</p>	<p>CASEE</p>		<p>JESTY</p>		<p>2000</p> <p>↑</p>	<p>IMASE</p> <p>✦</p>	
	<p>5 NM</p>		<p>4.4 NM</p>		<p>1.2 NM</p>		
CATEGORY	A	B	C	D			
GLS DA	NA						
LNAV/VNAV DA	520-¾		359 (400-¾)				
LNAV MDA	580-¾		419 (500-¾)				
CIRCLING	660-1¼		493 (500-1¼)		660-1½ 493 (500-1½)		
					720-2 553 (600-2)		