

RICHMOND, VIRGINIA

AL-347 (FAA)

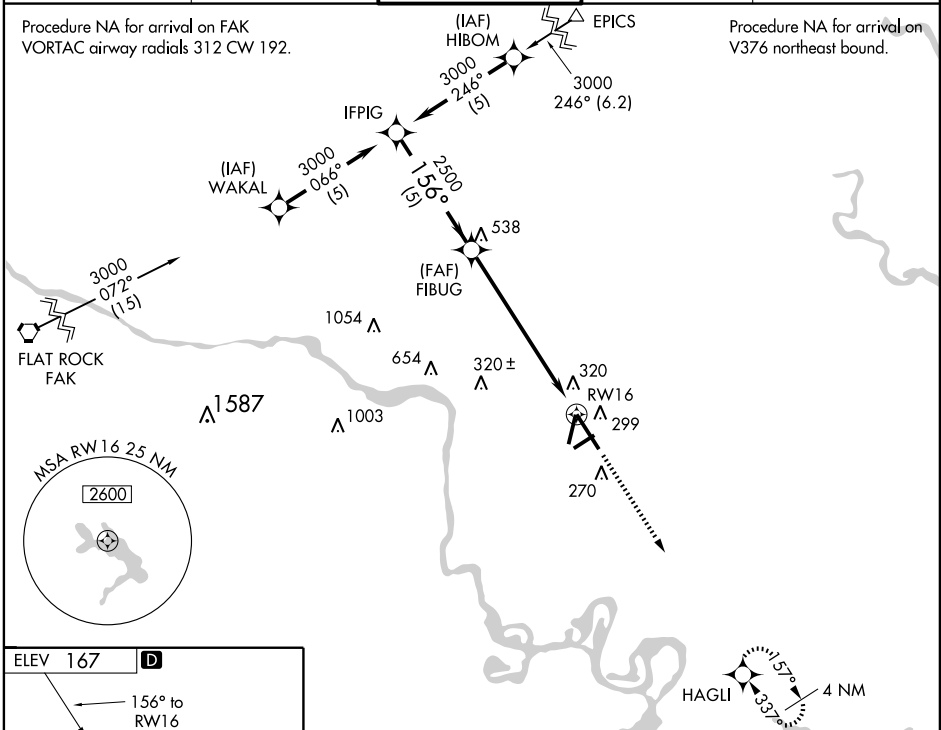
RNAV (GPS) RWY 16

RICHMOND INTL (RIC)

APP CRS 156°	Rwy Idg 9003
	TDZE 167
	Apt Elev 167

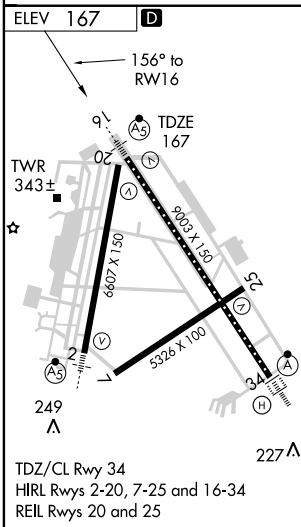
<p>▼ For uncompensated Baro-VNAV systems, LNAV/VNAV NA below -15°C (5°F) or above 49°C (120°F). ▲ NA DME/DME RNP-0.3 NA.</p>	<p>MALSR </p>	<p>MISSED APPROACH: Climb to 2500 direct HAGLI WP and hold.</p>
---	---------------------------	--

<p>ATIS 119.15 263.025</p>	<p>POTOMAC APP CON 134.7 307.2</p>	<p>RICHMOND TOWER 121.1 257.8</p>	<p>GND CON 121.9 348.6</p>	<p>CLNC DEL 127.55 348.6</p>
---------------------------------------	---	---	---------------------------------------	---



NE-3, 22 OCT 2009 to 19 NOV 2009

NE-3, 22 OCT 2009 to 19 NOV 2009



<p>IFPIG</p> <p>3000</p> <p>Procedure Turn NA</p> <p>GS 3.00° TCH 54</p>	<p>FIBUG</p> <p>2500</p> <p>*LNAV only</p>	<p>2500</p> <p>HAGLI</p>	<p>4 NM</p>	
				<p>5 NM</p>
<p>CATEGORY</p>	A	B	C	D
<p>GLS PA DA</p>	NA			
<p>LNAV/VNAV DA</p>	605/50 438 (500-1)			
<p>LNAV MDA</p>	800/24	633 (700-½)	800/60 633 (700-1¼)	800-1½ 633 (700-1½)
<p>CIRCLING</p>	800-1	633 (700-1)	800-1¾ 633 (700-1¾)	800-2 633 (700-2)

RICHMOND, VIRGINIA
Orig-A 09295

37°30'N · 77°19'W

RICHMOND INTL (RIC)

RNAV (GPS) RWY 16