

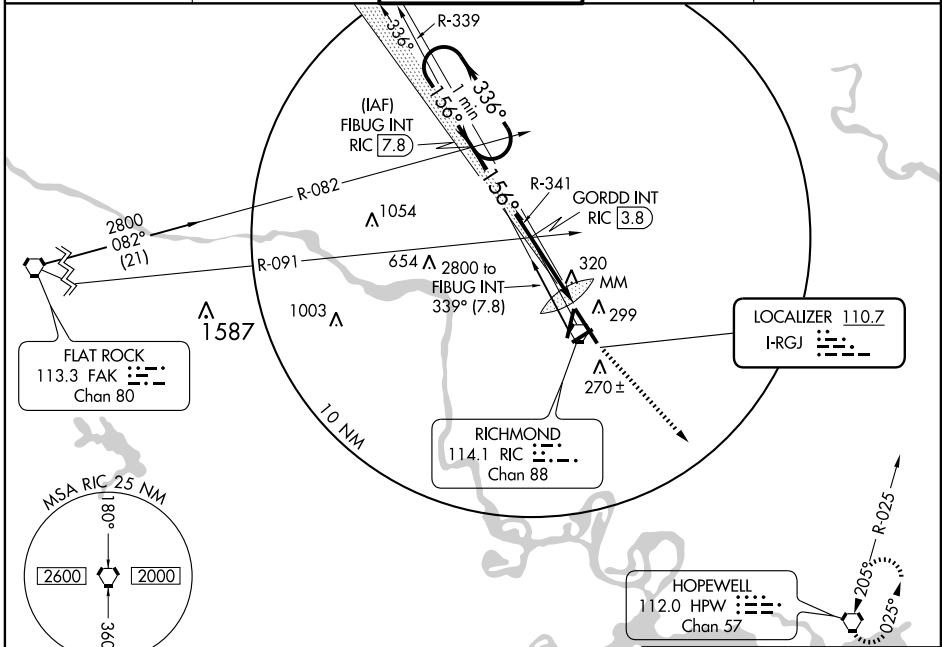
LOC I-RGJ	APP CRS	Rwy Idg	<b>9003</b>
<b>110.7</b>	<b>156°</b>	TDZE	<b>167</b>
		Apt Elev	<b>167</b>

# ILS or LOC RWY 16

RICHMOND INTL (RIC)

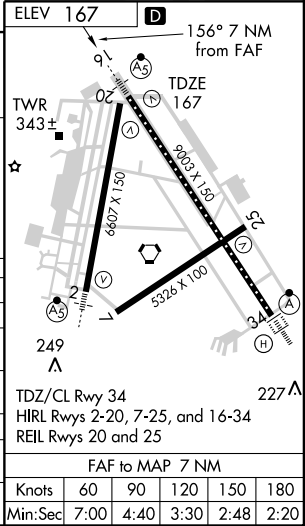
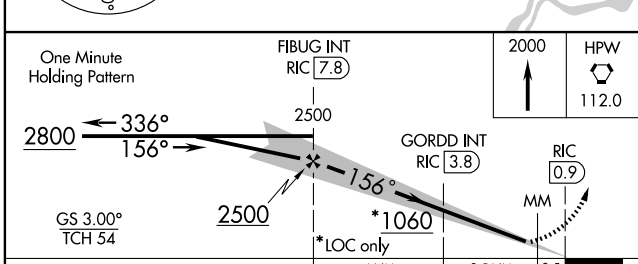
<b>▼</b> DME from RIC VORTAC.	<b>⚠</b> **RVR 1800 authorized with the use of FD or AP or HUD to DA.	<b>MALS</b> 	MISSED APPROACH: Climb to 2000 direct HPW VORTAC and hold.
-------------------------------	---	-----------------	--

ATIS <b>119.15 263.025</b>	POTOMAC APP CON <b>134.7 307.2</b>	<b>RICHMOND TOWER</b> <b>121.1 257.8</b>	GND CON <b>121.9 348.6</b>	CLNC DEL <b>127.55 348.6</b>
-------------------------------	---------------------------------------	---	-------------------------------	---------------------------------



NE-3, 22 OCT 2009 to 19 NOV 2009

NE-3, 22 OCT 2009 to 19 NOV 2009



CATEGORY	A	B	C	D
S-ILS 16	**367/24 200 (200-½)			
S-LOC 16	1060/40	893 (900-¾)	1060-2¼ 893 (900-2¼)	1060-2½ 893 (900-2½)
CIRCLING	1060-1¼	893 (900-1¼)	1060-2¾ 893 (900-2¾)	1060-3 893 (900-3)
GORDD FIX MINIMUMS				
S-LOC 16	580/24	413 (500-½)	580/40	413 (500-¾)
CIRCLING	660-1	493 (500-1)	660-1½ 493 (500-1½)	720-2 553 (600-2)

FAF to MAP 7 NM					
Knots	60	90	120	150	180
Min:Sec	7:00	4:40	3:30	2:48	2:20