

RICHMOND, VIRGINIA

AL-347 (FAA)

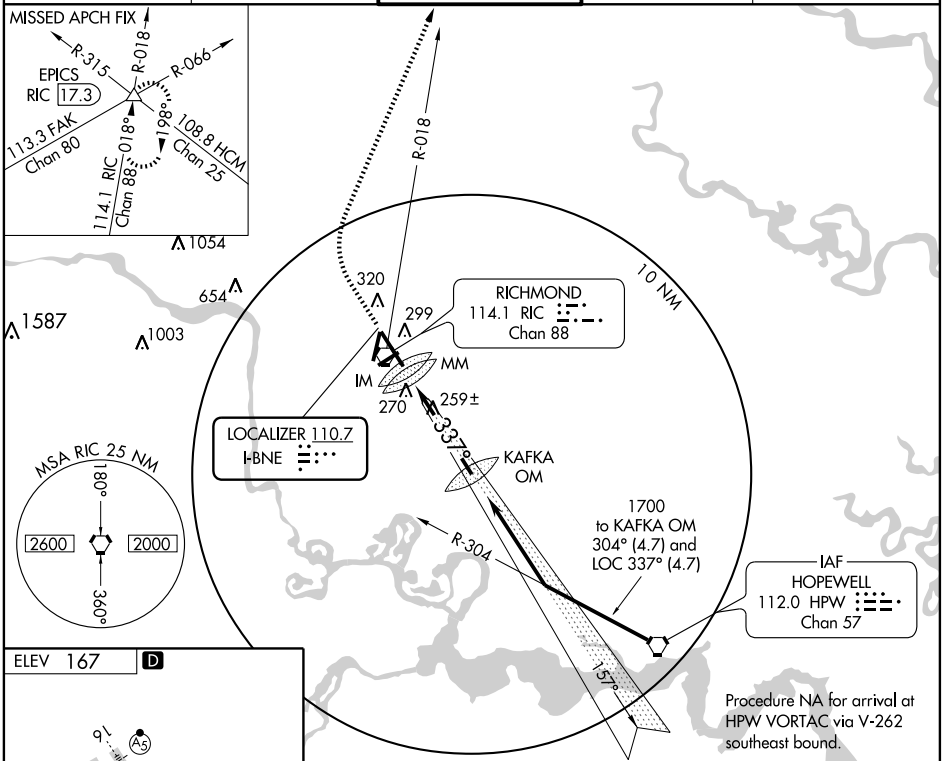
ILS RWY 34 (CAT III)

RICHMOND INTL (RIC)

LOC I-BNE 110.7	APP CRS 337°	Rwy Idg TDZE Apt Elev	9003 161 167
---------------------------	------------------------	-----------------------------	---

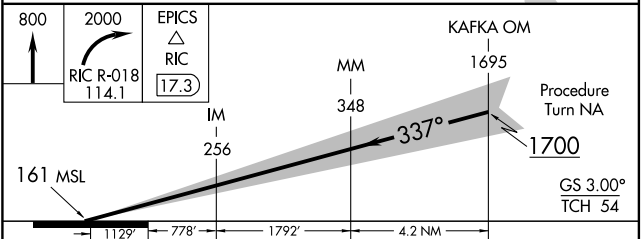
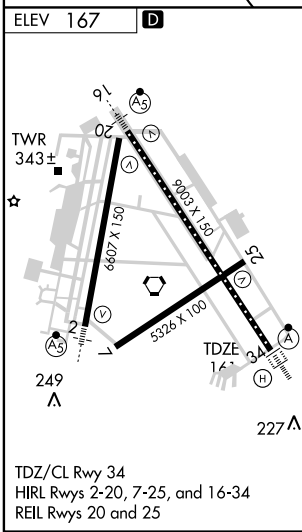
	MISSED APPROACH: Climb to 800 then climbing right turn to 2000 via RIC VORTAC R-018 to EPICS INT/ RIC 17.3 DME and hold.

ATIS 119.15 263.025	POTOMAC APP CON 134.7 307.2	RICHMOND TOWER 121.1 257.8	GND CON 121.9 348.6	CLNC DEL 127.55 348.6
-------------------------------	---------------------------------------	---	-------------------------------	---------------------------------



NE-3, 22 OCT 2009 to 19 NOV 2009

NE-3, 22 OCT 2009 to 19 NOV 2009



CATEGORY	A	B	C	D
S-ILS 34		CAT IIIA	RVR 07	
S-ILS 34		CAT IIIB	RVR 06	
S-ILS 34		CAT IIIC	NA	

CATEGORY III ILS-SPECIAL AIRCREW & AIRCRAFT CERTIFICATION REQUIRED

RICHMOND, VIRGINIA
Amdt 13C 09295

37°30'N - 77°19'W

RICHMOND INTL (RIC)

ILS RWY 34 (CAT III)