

ILS RWY 2

RICHMOND INTL (RIC)

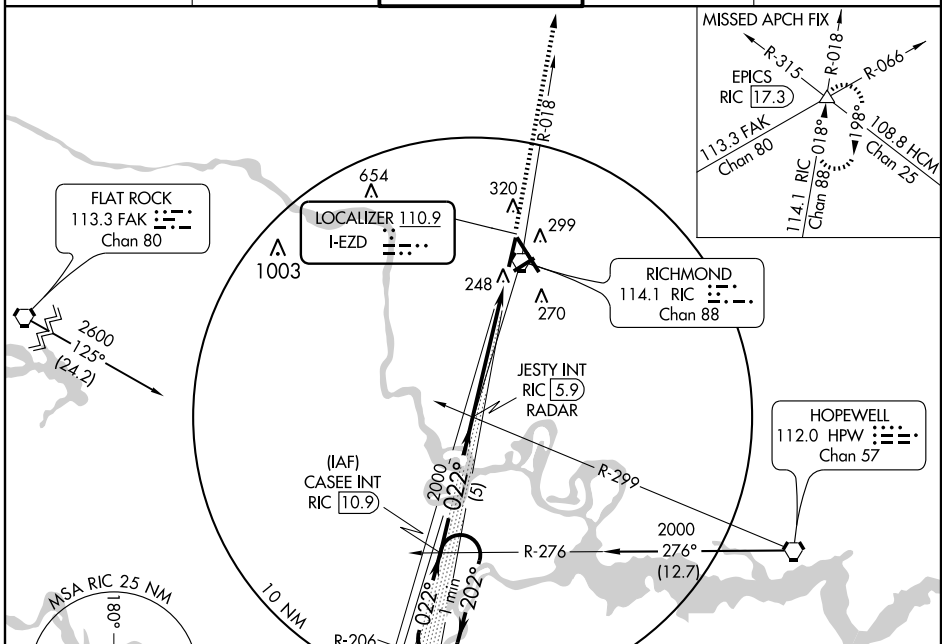
LOC I-EZD	APP CRS	Rwy Idg	6607
110.9	022°	TDZE	161
		Apt Elev	167

Inoperative table does not apply to S-ILS 2.
 For inoperative MALSR, increase S-LOC 2 Cat. A and B visibility to 1.

MALSR

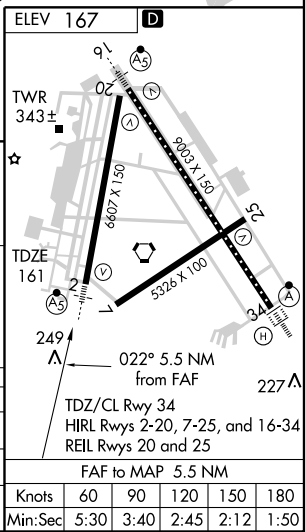
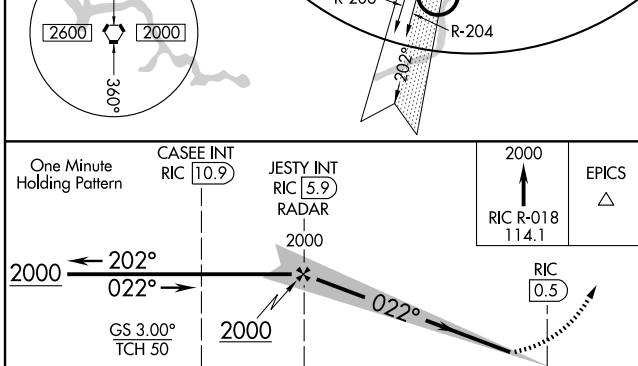
MISSED APPROACH: Climb to 2000 via RIC R-018 to EPICS INT/RIC 17.3 DME and hold.

ATIS	POTOMAC APP CON	RICHMOND TOWER	GND CON	CLNC DEL
119.15 263.025	134.7 307.2	121.1 257.8	121.9 348.6	127.55 348.6



NE-3, 22 OCT 2009 to 19 NOV 2009

NE-3, 22 OCT 2009 to 19 NOV 2009



CATEGORY	A	B	C	D
S-ILS 2		411- ³ / ₄ 250 (300- ³ / ₄)		
S-LOC 2		580- ³ / ₄ 419 (500- ³ / ₄)		
CIRCLING	660-1	493 (500-1)	660-1 ¹ / ₂ 493 (500-1 ¹ / ₂)	720-2 553 (600-2)

FAF to MAP 5.5 NM	Knots	60	90	120	150	180
	Min:Sec	5:30	3:40	2:45	2:12	1:50