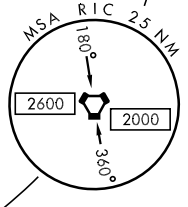
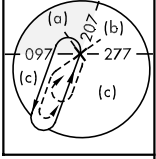
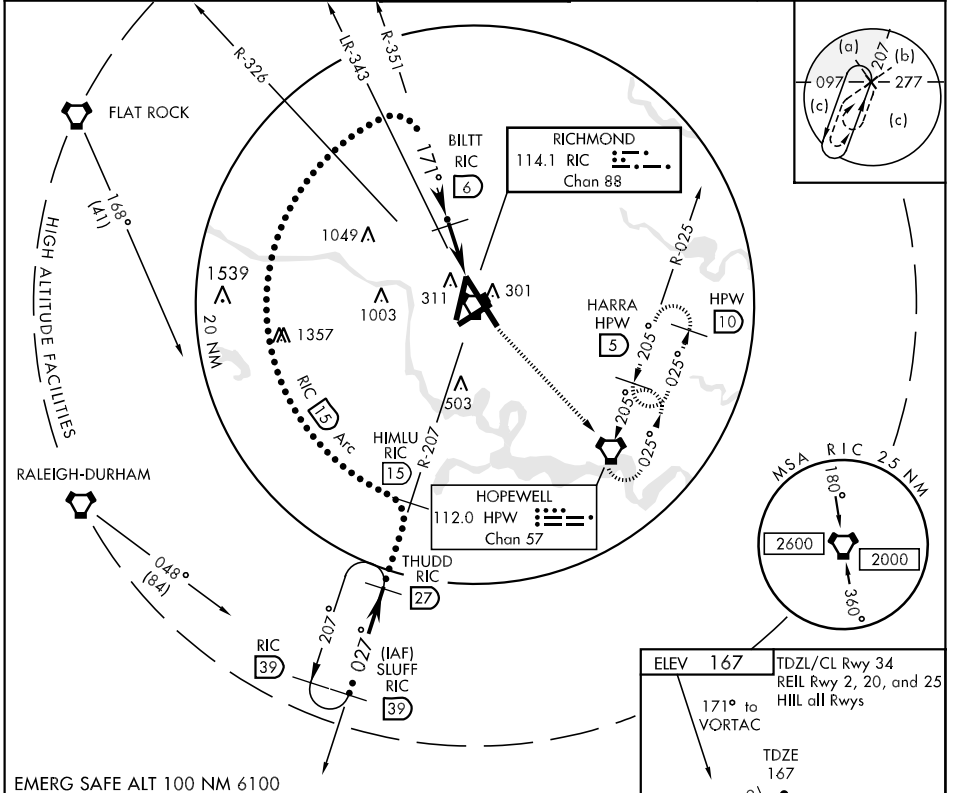


TACAN RIC Chan 88	APCH CRS 171°	Rwy Idg TDZE Arpt Elev 9003 167 167	JAL-347 [USAF]	RICHMOND INTL (KRIC)
----------------------	------------------	--	----------------	----------------------

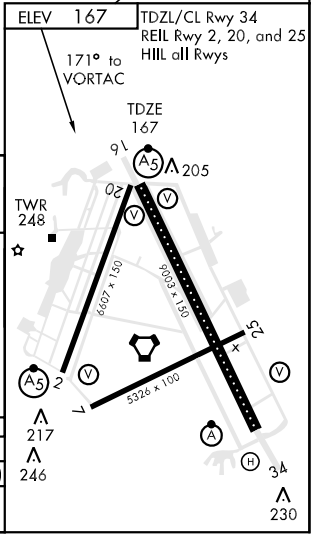
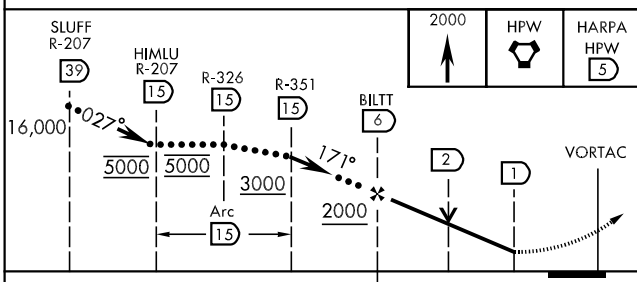
**MALSRL** MISSED APPROACH: Climb to 2000 direct to HPW VORTAC and hold. (TACAN acct continue to HARRA and hold.)

ATIS ★ 119.15 263.025	POTOMAC APP CON 134.7 307.2	RICHMOND TOWER 121.1 257.8	GND CON 121.9 348.6	CLNC DEL 127.55 348.6
--------------------------	--------------------------------	-------------------------------	------------------------	--------------------------



NE-3, 22 OCT 2009 to 19 NOV 2009

NE-3, 22 OCT 2009 to 19 NOV 2009



CATEGORY	C	D	E
S-16	640/40 473 (500-¾)	640/50 473 (500-1)	640/60 473 (500-1¼)
CIRCLING	640-1½ 473 (500-1½)	720-2 553 (600-2)	740-2 573 (600-2)