

WAGGE TWO DEPARTURE

SL-346 (FAA)

RENO/TAHOE INTL (RNO)
RENO, NEVADA

ATIS 135.8 363.0
CLNC DEL
124.9 370.85
GND CON
121.9 348.6
RENO TOWER
118.7 257.8
RENO DEP CON
119.2 279.55

CAUTION: Intensive Glider Activity

LOVELOCK
116.5 LLC
Chan 112
N40°07.50'-W118°34.66'
L-9-11, H-3

NOTE: All Runways: Cross departure end of rwy at or above 35 AGL.

NOTE: Rwy 16L: Tower/hazard beacon 6056' from departure end of rwy, 2403 left of centerline, 16 AGL/5027 MSL.

NOTE: Rwy 16R: Terrain 7638' from departure end of rwy, 2349 left of centerline, 4703 MSL.

MUSTANG
117.9 FMG
Chan 126
N39°31.88'-W119°39.36'
L-9, H-3

MINIMUM CROSSING ALTITUDES AT FMG FOR MUSTANG TRANSITION
V6 Southwest 12,000
V28-113 South 10,500
V165 South 10,000

LOCALIZER 110.9
I-RNO
Chan 46
N39°28.83'-W119°46.16'

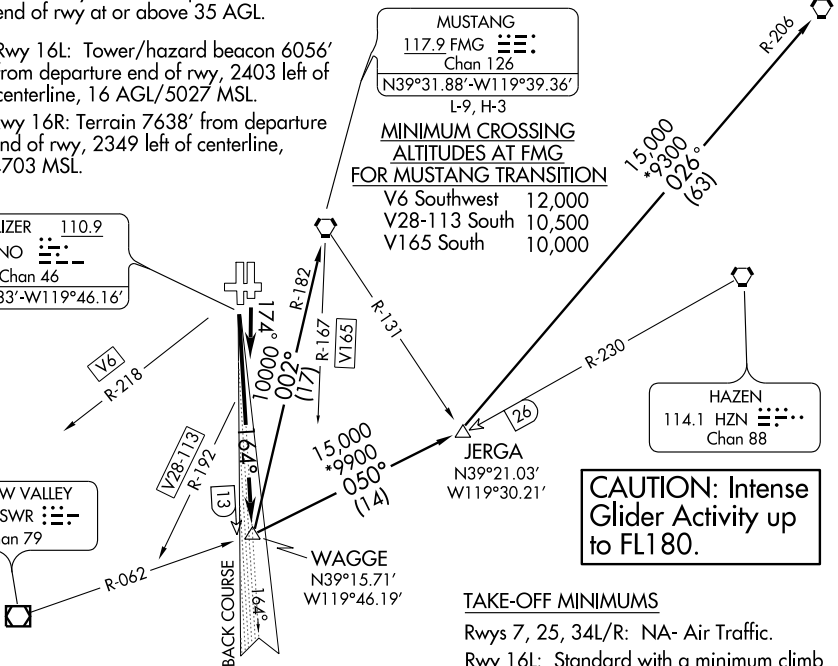
SQUAW VALLEY
113.2 SWR
Chan 79

HAZEN
114.1 HZN
Chan 88

CAUTION: Intense Glider Activity up to FL 180.

SW-4, 22 OCT 2009 to 19 NOV 2009

SW-4, 22 OCT 2009 to 19 NOV 2009



NOTE: Chart not to scale.

TAKE-OFF MINIMUMS

- Rwys 7, 25, 34L/R: NA- Air Traffic.
- Rwy 16L: Standard with a minimum climb of 740' per NM to 8000.
- Rwy 16R: Standard with a minimum climb of 370' per NM to 9200.

DEPARTURE ROUTE DESCRIPTION

TAKE-OFF RUNWAY 16L: Climbing right turn heading 174° to intercept I-RNO South course to WAGGE INT, thence via (transition) or (assigned route).

TAKE-OFF RUNWAY 16R: Climb via I-RNO South course to WAGGE INT, thence via (transition) or (assigned route).

All aircraft maintain 15,000 or assigned altitude. Expect clearance to requested altitude five minutes after departure

LOVELOCK TRANSITION (WAGGE2.LLC): From over WAGGE INT via HZN R-230 and LLC R-206 to LLC VORTAC.

MUSTANG TRANSITION (WAGGE2.FMG): From over WAGGE INT via FMG R-182 to FMG VORTAC.

WAGGE TWO DEPARTURE