

# VISTA ONE DEPARTURE

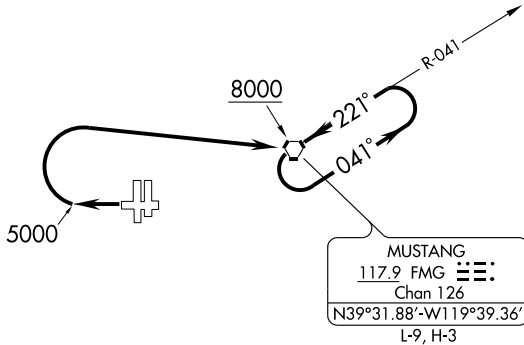
SL-346 (FAA)

RENO/TAHOE INTL (RNO)  
RENO, NEVADA

ATIS 135.8 363.0  
CLNC DEL  
124.9 370.85  
GND CON  
121.9 348.6  
RENO TOWER  
118.7 257.8  
RENO DEP CON  
126.3 353.9

### TAKE-OFF OBSTACLE NOTES

Rwy 25: Multiple poles left and right of centerline beginning 500' from DER, 467' left of centerline, up to 48' AGL/4523' MSL.  
Numerous trees left and right of centerline, beginning 1877' from DER, 31' left of centerline, up to 40' AGL/4506' MSL.  
Sign, 1656' from DER, 422' left of centerline, up to 31' AGL/4482' MSL.



### TAKE-OFF MINIMUMS

Rwy 7: NA- obstacles

Rwys 16L, 16R, 34L, 34R: NA- ATC.

Rwy 25: Cat A/B, do not exceed 180 KIAS until FMG VORTAC, standard with a minimum climb of 380' per NM to 8400, ATC climb of 495' per NM to 8000.

Cat C/D: NA- Air traffic control.

**CAUTION: Intense  
Glider Activity up  
to FL180.**

NOTE: Chart not to scale.



### DEPARTURE ROUTE DESCRIPTION

TAKE-OFF RUNWAY 25: Climb to 5000, then climbing right turn to 10000 or assigned altitude direct FMG VORTAC, cross FMG VORTAC at or above 8000. Climb in FMG holding pattern to depart FMG VORTAC at or above MEA/MCA for direction of flight. Expect clearance to requested altitude five minutes after departure.