

TARVR ONE ARRIVAL

ST-346 (FAA)

RENO/TAHOE INTL
RENO, NEVADA

SW-4, 22 OCT 2009 to 19 NOV 2009

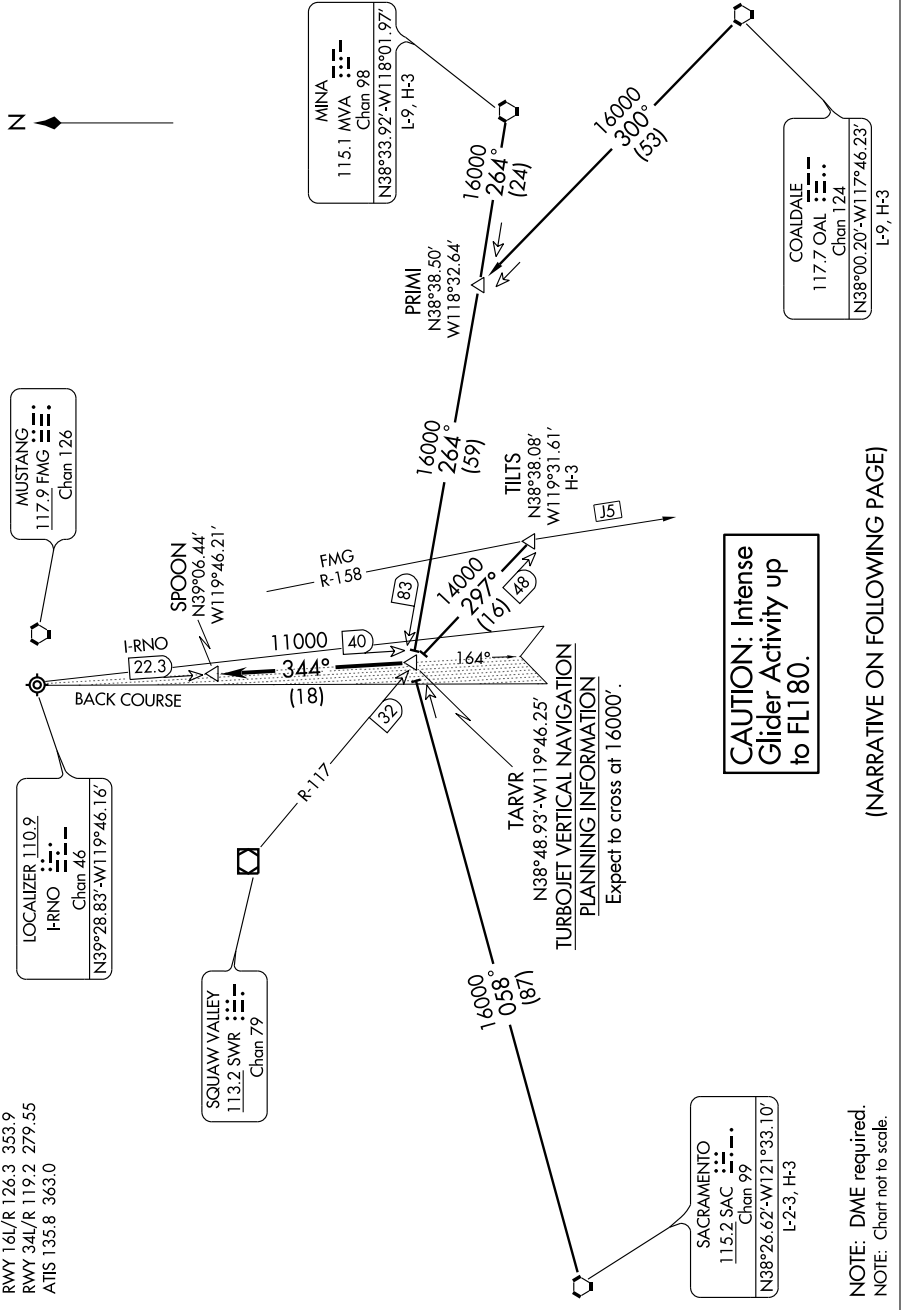
RENO APP CON
RWY 16L/R 126.3 353.9
RWY 34L/R 119.2 279.55
ATIS 135.8 363.0

LOCALIZER 110.9
I-RNO
Chan 46
N39°28.83'-W119°46.16'

MUSTANG
117.9 FMG
Chan 126

SQUAW VALLEY
113.2 SWR
Chan 79

SACRAMENTO
115.2 SAC
Chan 99
N38°26.62'-W121°33.10'
L-2-3, H-3



**CAUTION: Intense
Glider Activity up
to FL180.**

NOTE: DME required.
NOTE: Chart not to scale.

(NARRATIVE ON FOLLOWING PAGE)

SW-4, 22 OCT 2009 to 19 NOV 2009