

SOUTH HILLS VISUAL RWY 34L/R

AL-346 (FAA)

RENO/TAHOE INTL (RNO)
RENO, NEVADA

ATIS 135.8 363.0
 RENO APP CON
 119.2 279.55
 RENO TOWER
 118.7 257.8
 GND CON
 121.9 348.6
 CLNC DEL
 124.9 370.85

MUSTANG
 117.9 FMG
 Chan 126

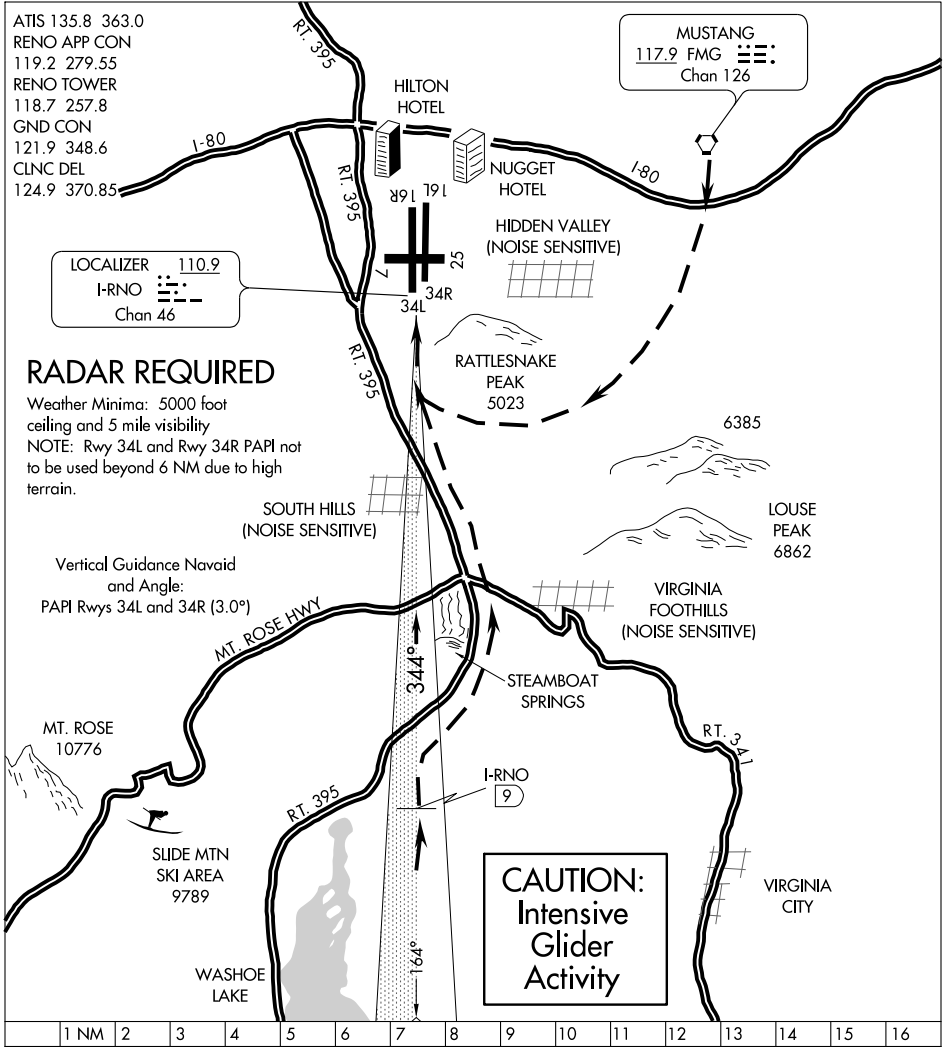
LOCALIZER 110.9
 I-RNO
 Chan 46

RADAR REQUIRED

Weather Minima: 5000 foot ceiling and 5 mile visibility
 NOTE: Rwy 34L and Rwy 34R PAPI not to be used beyond 6 NM due to high terrain.

Vertical Guidance Navaid and Angle:
 PAPI Rwsy 34L and 34R (3.0°)

CAUTION:
Intensive
Glider
Activity



SW-4, 22 OCT 2009 to 19 NOV 2009

SW-4, 22 OCT 2009 to 19 NOV 2009

SOUTH HILLS VISUAL APPROACH RUNWAY 34L/R
 PROCEDURE NOT AUTHORIZED AT NIGHT

When visual approaches to Runways 34L/R are in progress, clearances to aircraft will be given utilizing the following phraseology:
 "(IDENT) CLEARED FOR SOUTH HILLS VISUAL RUNWAY 34 LEFT/RIGHT APPROACH."

SOUTH HILLS VISUAL RWY 34L/R

39°30'N-119°46'W

RENO, NEVADA
RENO/TAHOE INTL (RNO)