

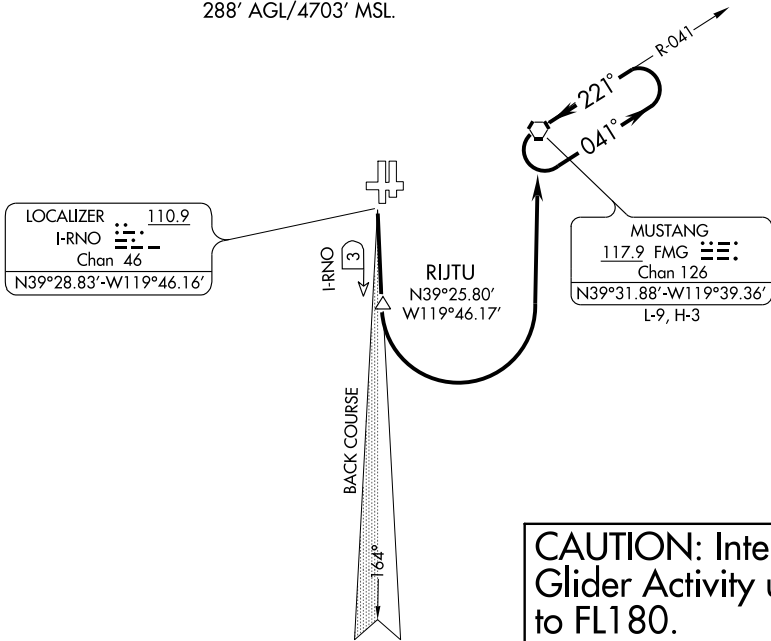
MUSTANG SEVEN DEPARTURE

SL-346 (FAA)

ATIS 135.8 363.0
CLNC DEL
124.9 370.85
GND CON
121.9 348.6
RENO TOWER
118.7 257.8
RENO DEP CON
119.2 325.8

TAKE-OFF OBSTACLE NOTES

Rwy 16L: Multiple antennas, trees, and light poles beginning 618' from DER, 131' left of centerline, up to 40' AGL/4449' MSL.
Terrain beginning 5189' from DER, 821' left of centerline, up to 5027' MSL.
Rwy 16R: Multiple antennas, trees, and light poles beginning 746' from DER, 380' left of centerline, up to 95' AGL/4510' MSL.
Terrain beginning 2784' from DER, 990' right of centerline, up to 288' AGL/4703' MSL.



TAKE-OFF MINIMUMS

Rwy 7: NA- obstacles

Rwys 25, 34L/34R: NA- ATC.

Rwy 16L: Standard with minimum climb of 740' per NM to 8000 or, 600-1¼ with minimum climb of 525' per NM to 8000.

Rwy 16R: Standard with minimum climb of 740' per NM to 8000 or, 600-1¼ with minimum climb of 525' per NM to 8000.

NOTE: DME required.

NOTE: Chart not to scale.

DEPARTURE ROUTE DESCRIPTION

TAKE-OFF RUNWAYS 16L/R: Climb to 10000 or assigned altitude, via I-RNO south course to RIJTU/3 DME, then left turn direct FMG VORTAC. Climb in FMG holding pattern to depart FMG VORTAC at or above MEA/MCA for direction of flight. Expect clearance to requested altitude five minutes after departure.

MUSTANG SEVEN DEPARTURE

SW-4, 22 OCT 2009 to 19 NOV 2009

SW-4, 22 OCT 2009 to 19 NOV 2009