

VORTAC FMG 117.9 Chan 126	APCH CRS 239°	Rwy ldg TDZE N/A	N/A
		Arpt Elev 4412	

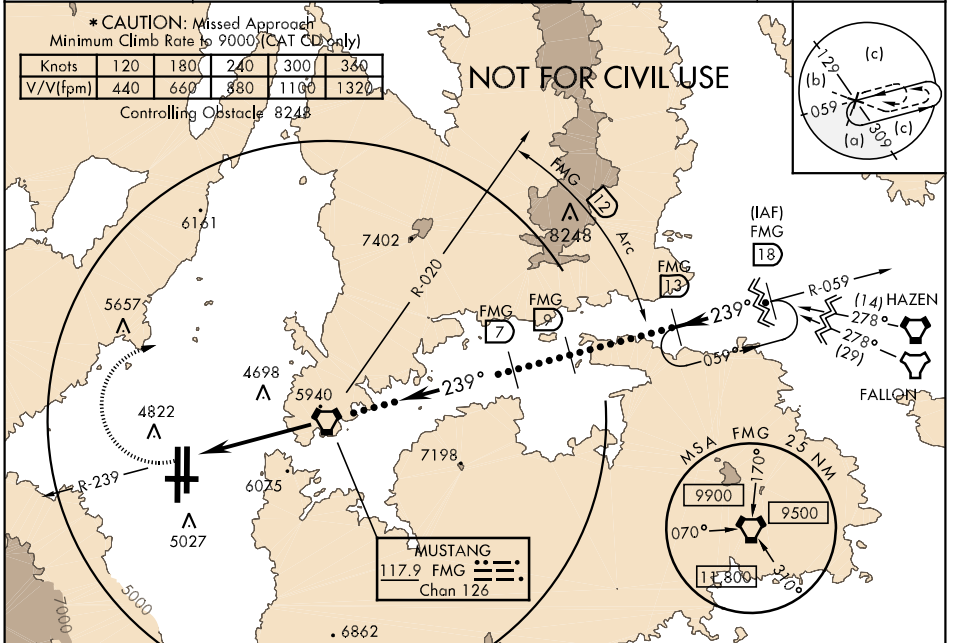
JAL-346 [USN]

RENO/TAHOE INTL (KRNO)

**** Category E circling not authorized to Rwy 7-25.**
Approaches RADAR monitored by Reno APP CON. Arrivals from East and aircraft on missed approach may be vectored to final.

*** MISSED APPROACH:** Make climbing right turn to 10,000 heading 060° to R-020, then arc NE on 12 mile arc to join R-059 inbound.

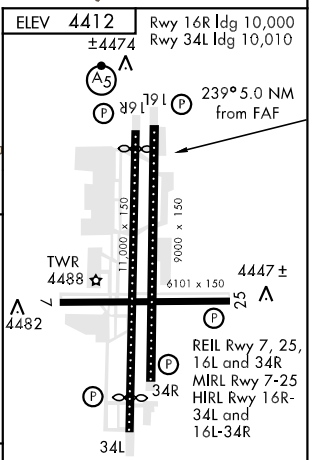
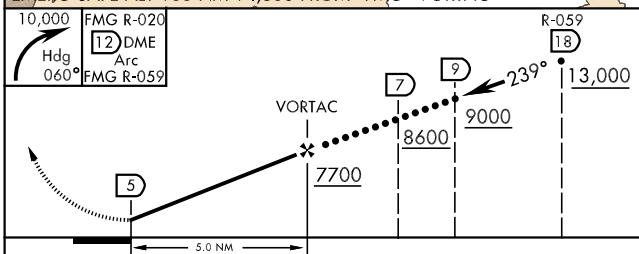
ATIS 135.8 277.2	RENO APP CON 119.2 353.9	RENO TOWER 118.7 257.8	GND CON 121.9 348.6	CLNC DEL 124.9 343.9
----------------------------	------------------------------------	----------------------------------	-------------------------------	--------------------------------



SW-4, 22 OCT 2009 to 19 NOV 2009

SW-4, 22 OCT 2009 to 19 NOV 2009

EMERG SAFE ALT 100 NM 14,600 FROM "FMG" VORTAC



CATEGORY	C		D		E		FAF to MAP 5.0 NM					
CIRCLING**	5960-3	1548	(1600-3)		6380-3		Knots	120	140	160	180	200
					1968 (2000-3)		Min:Sec	2:30	2:09	1:53	1:40	1:30