

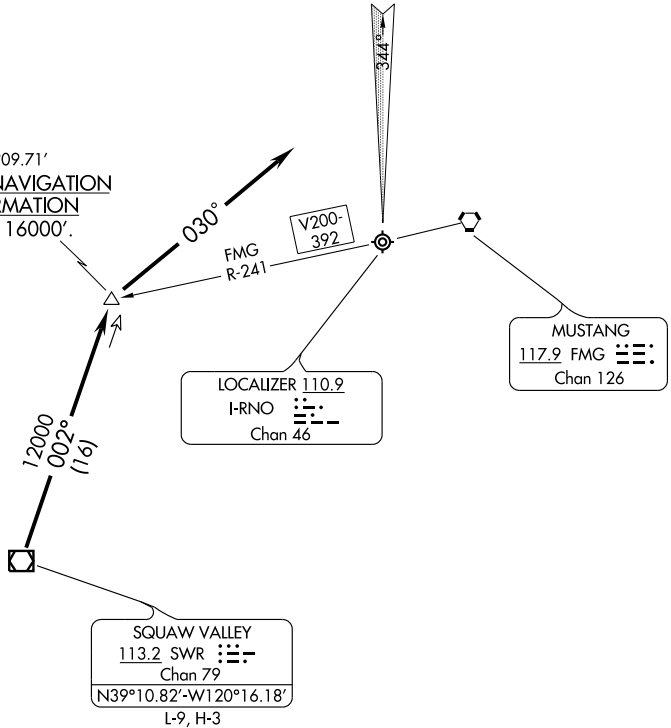
CANNON TWO ARRIVAL

ST-346 (FAA)

RENO/TAHOE INTL
RENO, NEVADA

RENO APP CON
RWY 16L/R 126.3 353.9
RWY 34L/R 119.2 279.55
ATIS 135.8 363.0

TRUCK
N39°26.26'-W120°09.71'
**TURBOJET VERTICAL NAVIGATION
PLANNING INFORMATION**
Expect to cross at 16000'.



SW-4, 22 OCT 2009 to 19 NOV 2009

SW-4, 22 OCT 2009 to 19 NOV 2009

**CAUTION: Intense
Glider Activity up
to FL180.**

NOTE: RADAR Required.
NOTE: Chart not to scale.

From over SWR VOR/DME via SWR R-002 to TRUCK INT/DME. Depart TRUCK INT/DME heading 030° for vectors to final approach.

CANNON TWO ARRIVAL