

REDMOND, OREGON

AL-345 (FAA)

# RNAV (GPS) Z RWY 28

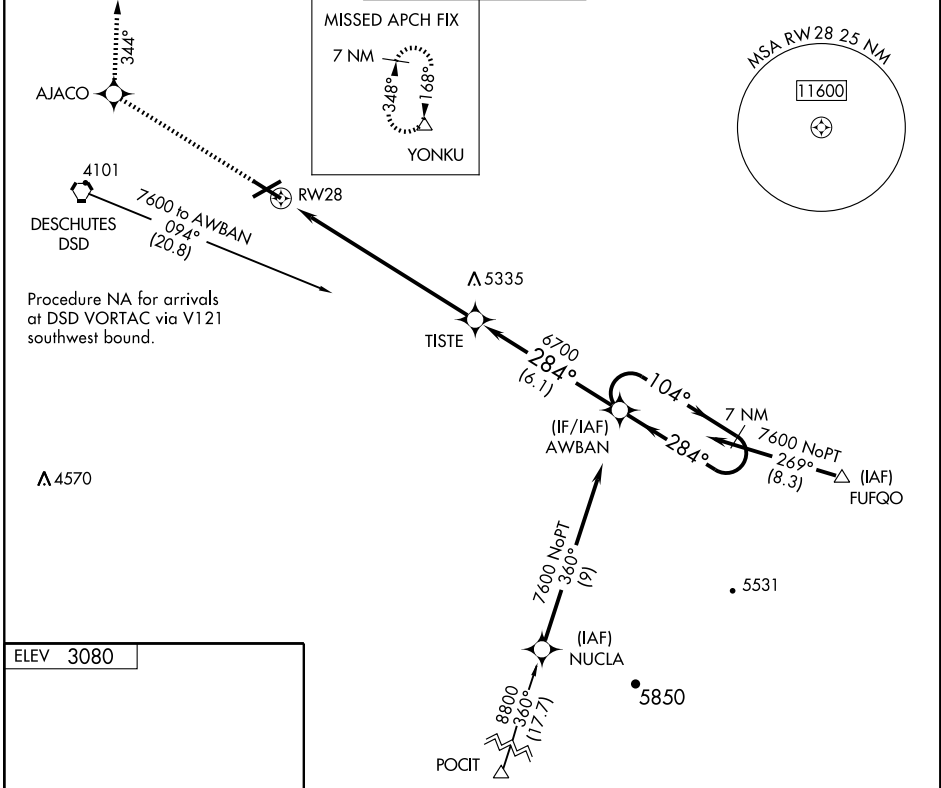
REDMOND/ROBERTS FIELD (RDM)

WAAS CH <b>90214</b> <b>W28A</b>	APP CRS <b>284°</b>	Rwy Idg TDZE Apt Elev	<b>7006</b> <b>3080</b> <b>3080</b>
--	------------------------	-----------------------------	---

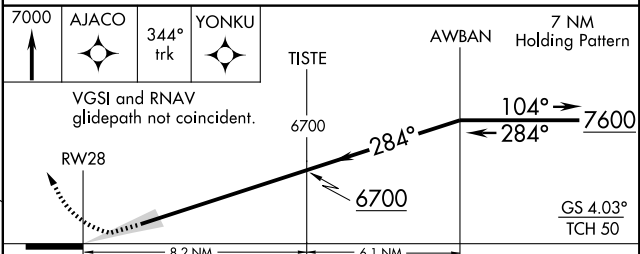
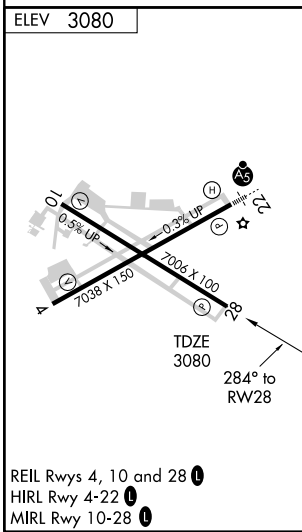
**▼** DME/DME RNP -0.3 NA.  
When local altimeter setting not received, procedure NA.  
Circling requires descent on glidepath to MDA.

MISSED APPROACH: Climb to 7000 direct AJACO and via track 344° to YONKU and hold, continue climb-in-hold to 7000.

ATIS <b>119.025</b>	SEATTLE CENTER <b>128.15 257.75</b>	REDMOND TOWER★ <b>124.5 (CTAF) 256.8</b>	GND CON <b>121.8</b>	UNICOM <b>122.95</b>
------------------------	--	---	-------------------------	-------------------------



Procedure NA for arrivals at DSD VORTAC via V121 southwest bound.



CATEGORY	A	B	C	D
LPV DA	3366-3/4 286 (300-3/4)	3366-1 286 (300-1)		NA
CIRCLING	3480-1 400 (400-1)	3540-1 460 (500-1)		NA

REDMOND, OREGON  
Orig 09239

44°15'N-121°09'W

# RNAV (GPS) Z RWY 28

NW-1, 22 OCT 2009 to 19 NOV 2009

NW-1, 22 OCT 2009 to 19 NOV 2009