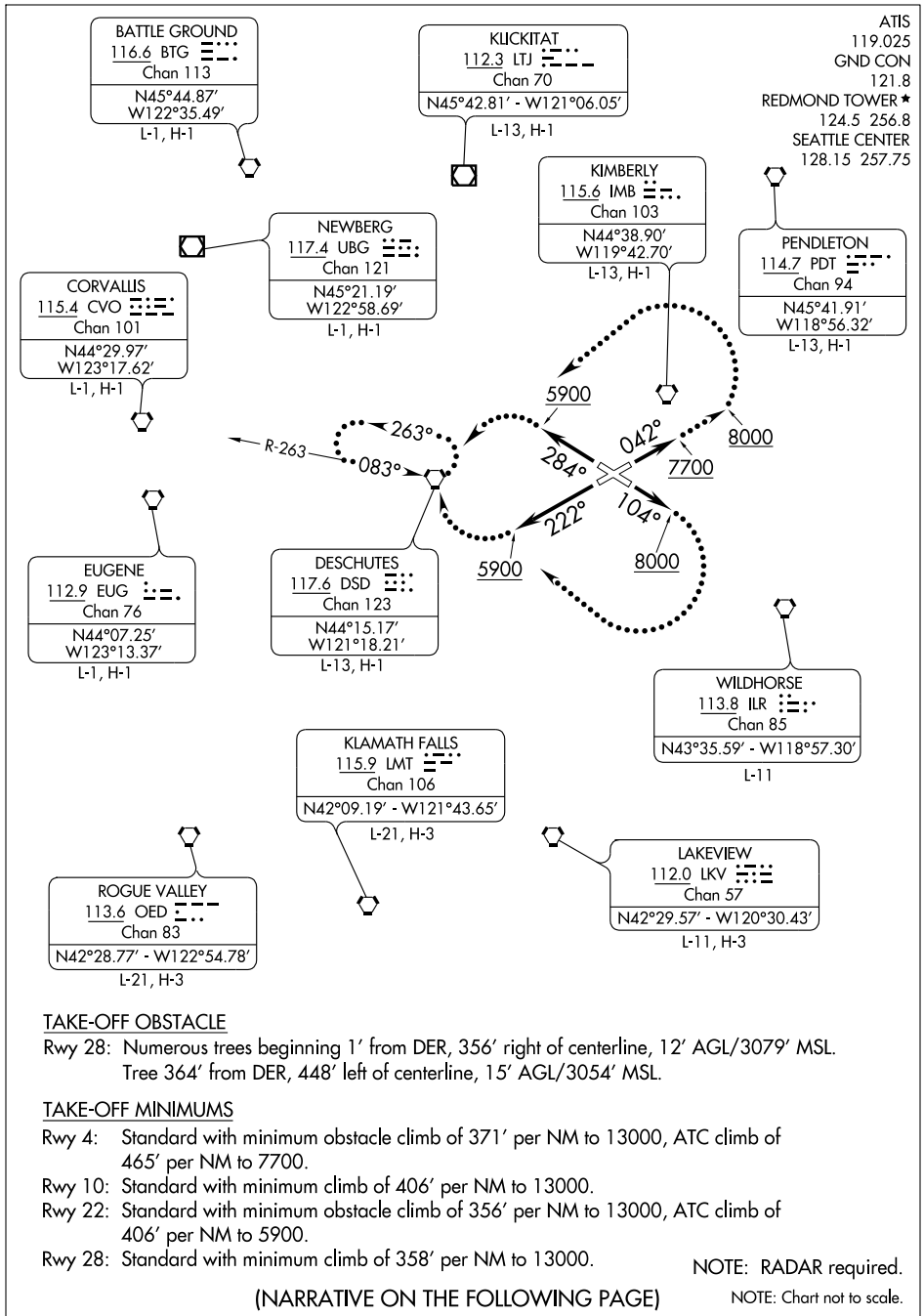


# REDMOND ONE DEPARTURE



NW-1, 22 OCT 2009 to 19 NOV 2009

NW-1, 22 OCT 2009 to 19 NOV 2009

### TAKE-OFF OBSTACLE

Rwy 28: Numerous trees beginning 1' from DER, 356' right of centerline, 12' AGL/3079' MSL.  
Tree 364' from DER, 448' left of centerline, 15' AGL/3054' MSL.

### TAKE-OFF MINIMUMS

- Rwy 4: Standard with minimum obstacle climb of 371' per NM to 13000, ATC climb of 465' per NM to 7700.
- Rwy 10: Standard with minimum climb of 406' per NM to 13000.
- Rwy 22: Standard with minimum obstacle climb of 356' per NM to 13000, ATC climb of 406' per NM to 5900.
- Rwy 28: Standard with minimum climb of 358' per NM to 13000.

NOTE: RADAR required.

(NARRATIVE ON THE FOLLOWING PAGE)

NOTE: Chart not to scale.

# REDMOND ONE DEPARTURE