

RNAV (GPS) RWY 4

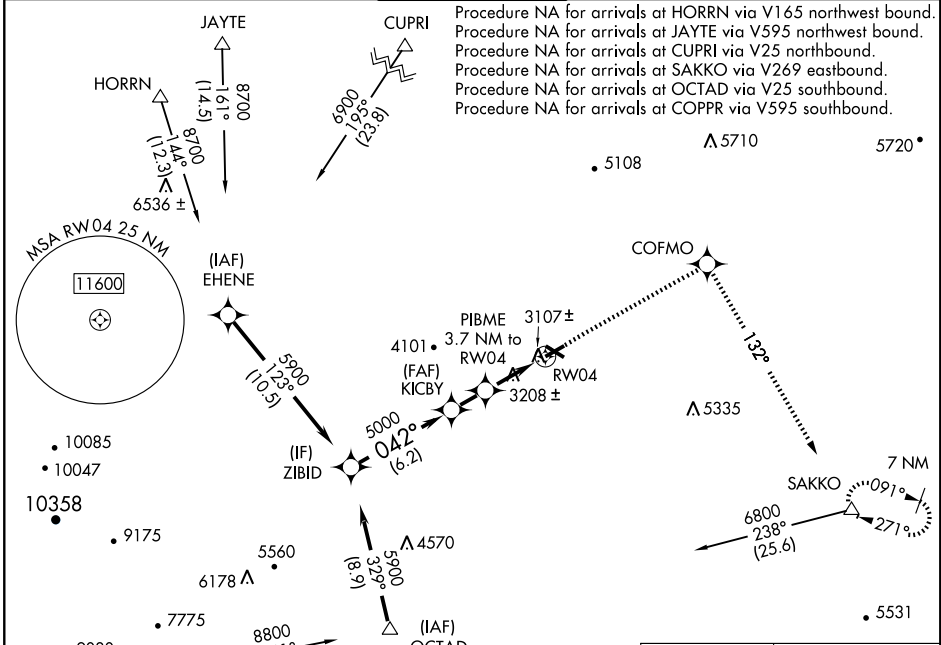
REDMOND/ROBERTS FIELD (RDM)

WAAS CH 70514 W04A	APP CRS 042°	Rwy Idg TDZE Apt Elev	7038 3075 3080
--	------------------------	-----------------------------	---

▼ For uncompensated Baro-VNAV systems, LNAV/VNAV NA below -21°C (-5°F) or above 43°C (109°F). DME/DME RNP -0.3 NA. When local altimeter setting not received procedure NA.

MISSED APPROACH: Climb to 9500 direct COFMO and via track 132° to SAKKO and hold, continue climb-in-hold to 9500.

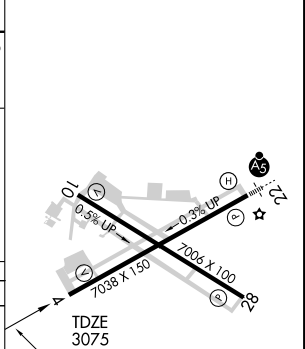
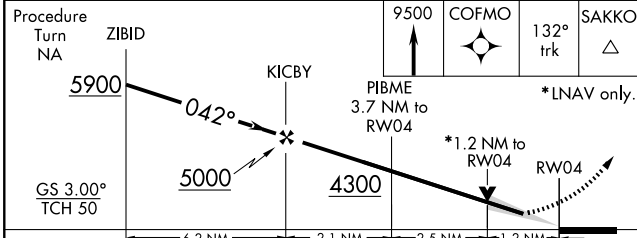
ATIS 119.025	SEATTLE CENTER 128.15 257.75	REDMOND TOWER* 124.5 (CTAF) 256.8	GND CON 121.8	UNICOM 122.95
------------------------	--	--	-------------------------	-------------------------



NW-1, 22 OCT 2009 to 19 NOV 2009

NW-1, 22 OCT 2009 to 19 NOV 2009

ELEV 3080



CATEGORY	A	B	C	D
LPV DA	3325-¾		250 (300-¾)	
LNAV/VNAV DA	3367-1		292 (300-1)	
LNAV MDA	3520-1	445 (500-1)	3520-1½ 445 (500-1½)	3520-1½ 445 (500-1½)
CIRCLING	3520-1 440 (500-1)	3540-1 460 (500-1)	3540-1½ 460 (500-1½)	3640-2 560 (600-1)

042° to RW04

REIL Rwy 4, 10 and 28
 HIRL Rwy 4-22
 MIRL Rwy 10-28