


RNAV (GPS) RWY 22

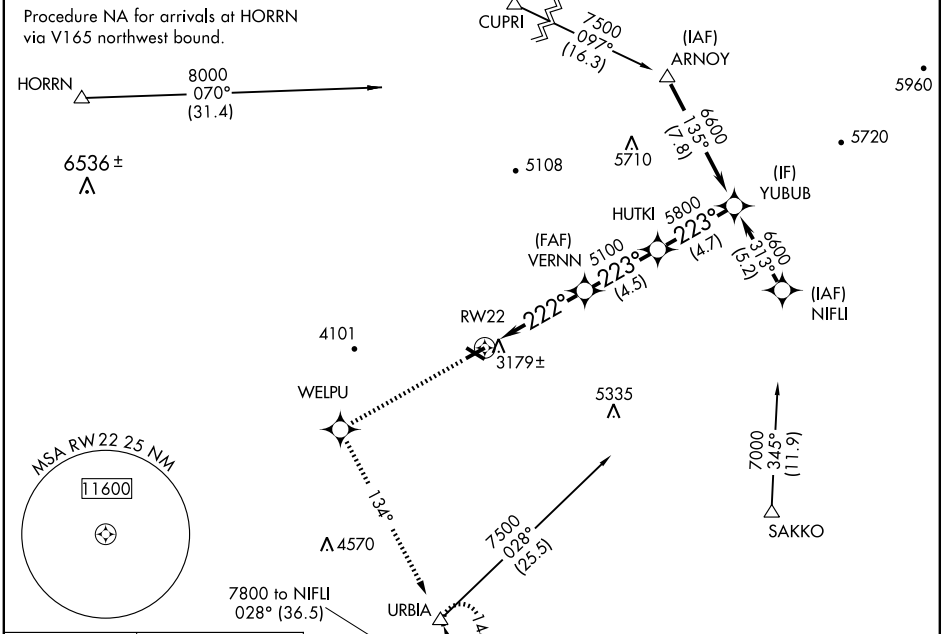
REDMOND/ROBERTS FIELD (RDM)

WAAS CH 82514 W22A	APP CRS 222°	Rwy Idg TDZE Apt Elev	7038 3065 3080
--	------------------------	-----------------------------	---

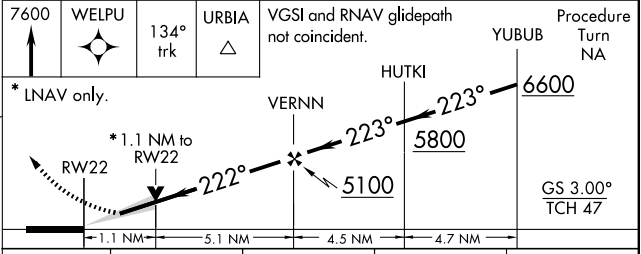
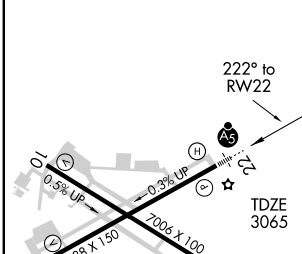
▼ For uncompensated Baro-VNAV systems, LNAV/VNAV NA below -21°C (-5°F) or above 43°C (109°F). DME/DME RNP -0.3 NA. When local altimeter setting not received, procedure NA. For inoperative MALSR, increase LNAV Cat. D visibility to 1½ mile.

MALSR

MISSED APPROACH: Climb to 7600 direct WELPU and via track 134° to URBIA and hold, continue climb-in-hold to 7600.

ATIS 119.025	SEATTLE CENTER 128.15 257.75	REDMOND TOWER★ 124.5 (CTAF) 0 256.8	GND CON 121.8	UNICOM 122.95
------------------------	--	--	-------------------------	-------------------------



ELEV	3080
------	-------------



CATEGORY	A	B	C	D
LPV DA		3265-½	200 (200-½)	
LNAV/VNAV DA		3449-1	384 (400-1)	
LNAV MDA		3440-½	375 (400-½)	3440-1 375 (400-1)
CIRCLING	3480-1 400 (400-1)	3540-1 460 (500-1)	3540-1½ 460 (500-1½)	3640-2 560 (600-1)

REIL Rws 4, 10 and 28
 HIRL Rwy 4-22
 MIRL Rwy 10-28

NW-1, 22 OCT 2009 to 19 NOV 2009

NW-1, 22 OCT 2009 to 19 NOV 2009