

VORTAC RBL <b>115.7</b> Chan <b>104</b>	APP CRS <b>328°</b>	Rwy Idg TDZE <b>352</b> Apt Elev <b>352</b>
---	------------------------	---

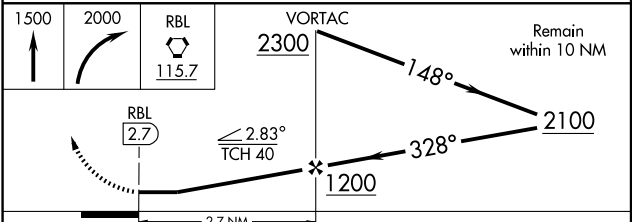
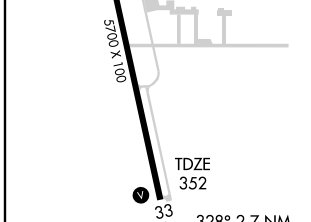
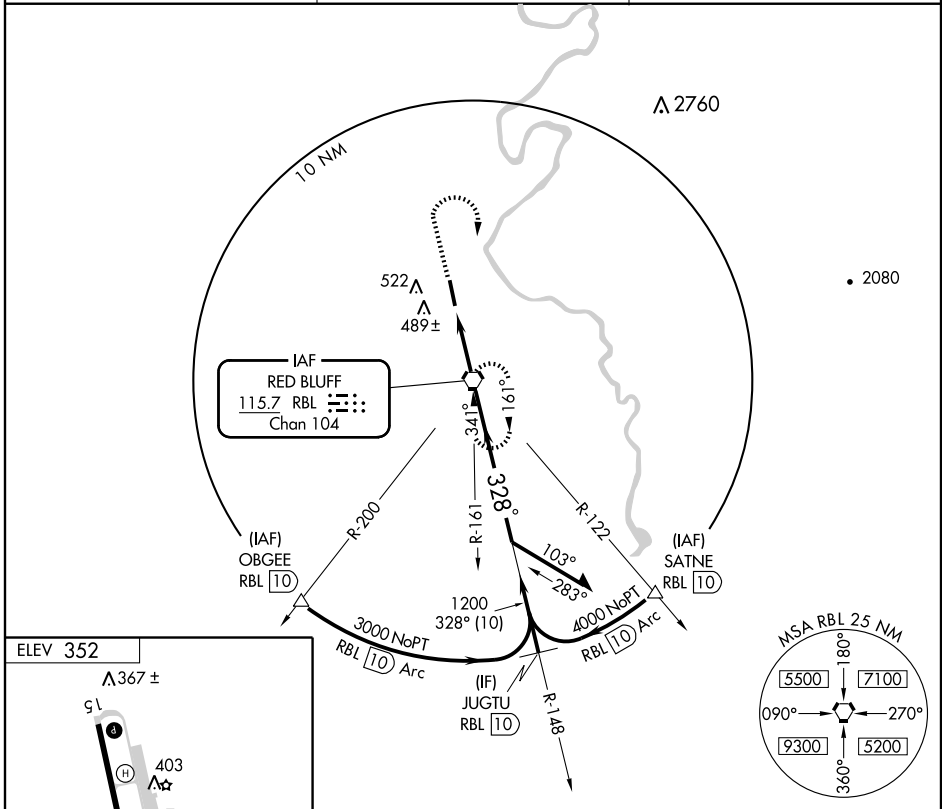
# VOR RWY 33

RED BLUFF MUNI (RBL)

**⚠** Visibility reduction by helicopters NA.  
 When local altimeter setting not received, use Redding altimeter setting and increase all MDA 80 feet, and increase visibilities S-33 Cat C and D ¼ mile.

MISSED APPROACH: Climb to 1500, then climbing right turn to 2000 direct RBL VORTAC and hold.

ASOS <b>120.775</b>	OAKLAND CENTER <b>132.2 350.3</b>	UNICOM <b>123.0 (CTAF) 0</b>
------------------------	--------------------------------------	---------------------------------



FAF to MAP 2.7 NM					
Knots	60	90	120	150	180
Min:Sec	2:42	1:48	1:21	1:05	0:54
CATEGORY	A	B	C	D	
S-33	740-1 388 (400-1)			740-1¼	388 (400-1¼)
CIRCLING	840-1 488 (500-1)		840-1½	920-2 568 (600-2)	

SW-2, 22 OCT 2009 to 19 NOV 2009

SW-2, 22 OCT 2009 to 19 NOV 2009