

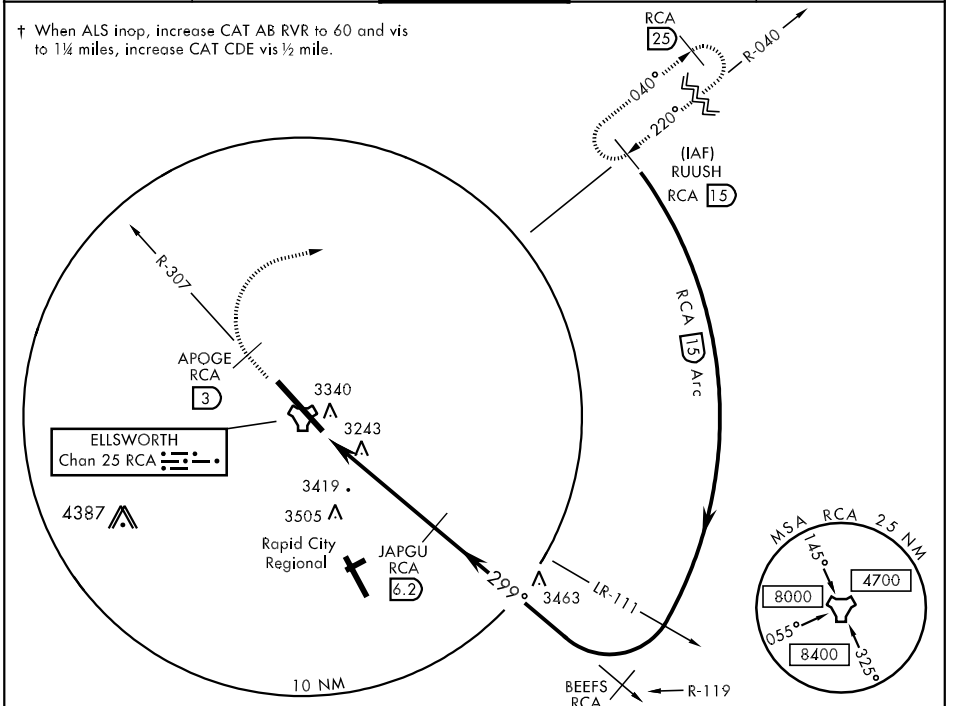
TACAN RCA Chan 25	APCH CRS 299°	Rwy ldg 13,497 TDZE 3192 Arpt Elev 3276	AL-343 [USAF]	ELLSWORTH AFB (KRCA)
-----------------------------	-------------------------	--	---------------	----------------------

* When ALS inop, increase CAT AB RVR to 50 and vis to 1 mile, increase CAT CDE vis ½ mile.
 ** CAT E circling restricted to 28th BW aircraft only; 28th BW aircraft will remain within Class D airspace.

ALSF-1

MISSED APPROACH: Track outbound RCA R-307 to 3 DME (APOGE), then turn right to join RCA R-040 outbound to (RUUSH) RCA 15 DME and hold. Maintain 6000.

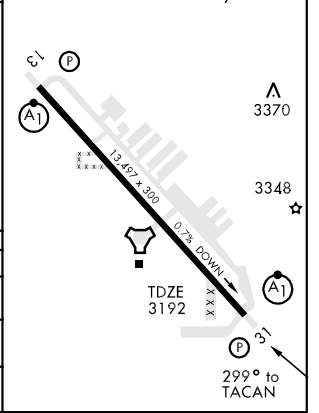
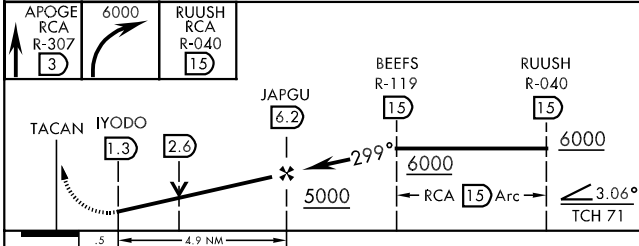
ATIS ★ 120.625 269.9	ELLSWORTH APP CON 119.5 259.1	ELLSWORTH TOWER ★ 126.05 253.5	GND CON 121.8 275.8	ASR
--------------------------------	---	--	-------------------------------	-----



EMERG SAFE ALT 100 NM 9800

ELEV 3276

HIRL Rwy 13-31



CATEGORY	A	B	C	D	E
S-31 *	3820/24	628 (600-½)	3820/60 628 (600-1¼)	3820-1½ 628 (600-1½)	3820-1¾ 628 (600-1¾)
CIRCLING **	3860-1 584 (600-1)	3880-1 604 (700-1)	3880-1¾ 604 (700-1¾)	3880-2 604 (700-2)	4040-2¾ 764 (800-2¾)
S-ASR 31 †	3820/40	628 (600-¾)	3820/60 628 (600-1¼)	3820-1½ 628 (600-1½)	3820-1¾ 628 (600-1¾)

NC-1, 22 OCT 2009 to 19 NOV 2009

NC-1, 22 OCT 2009 to 19 NOV 2009