

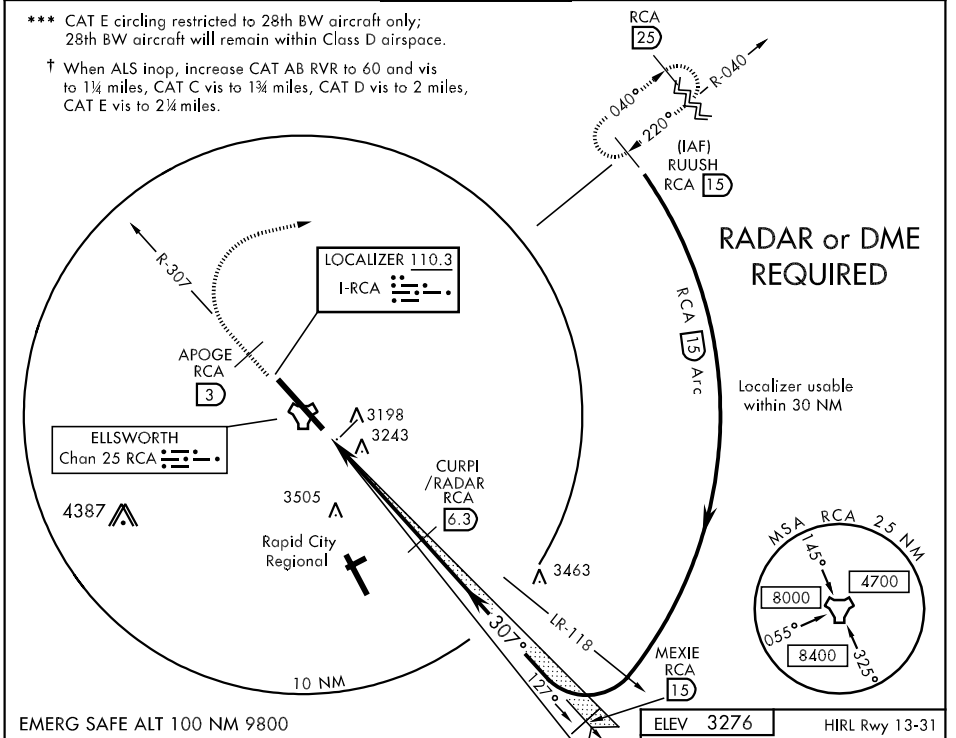
LOC I-RCA 110.3	APCH CRS 307°	Rwy Idg 13,497 TDZE 3192 Arpt Elev 3276	AL-343 [USAF]	ELLSWORTH AFB (KRCA)
---------------------------	-------------------------	--	---------------	----------------------

* When ALS inop, increase RVR to 40 and vis to 3/4 mile.
 ** When ALS inop, increase CAT AB RVR to 50 and vis to 1 mile, CAT C vis to 1 3/4 miles, CAT D vis to 2 miles, CAT E vis to 2 1/4 miles.

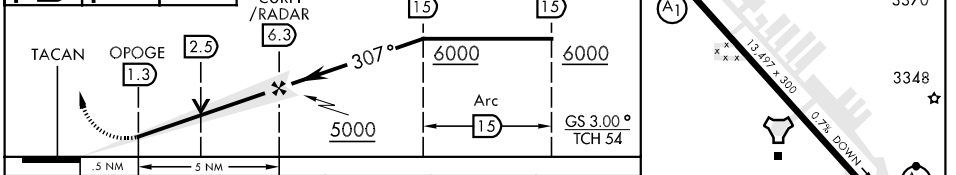
ALSF-1

MISSED APPROACH: Track outbound RCA R-307 to 3 DME (APOGE), then turn right to join RCA R-040 outbound to (RUUSH) RCA 15 DME and hold. Maintain 6000.

ATIS ★ 120.625 269.9	ELLSWORTH APP CON 119.5 259.1	ELLSWORTH TOWER ★ 126.05 253.5	GND CON 121.8 275.8	ASR
--------------------------------	---	--	-------------------------------	-----



APOGE RCA R-307	6000	RUUSH RCA R-040	MEXIE Intcp Lczz	RUUSH R-040
-----------------	------	-----------------	------------------	-------------



CATEGORY	A	B	C	D	E
S-ILS 31 *	3392/24		200	(200-1/2)	
S-LOC/DME 31 **	3800/24	608 (600-1/2)	3800/60 608 (600-1 1/4)	3800-1 1/2 608 (600-1 1/2)	3800-1 3/4 608 (600-1 3/4)
CIRCLING ***	3860-1 584 (600-1)	3880-1 604 (700-1)	3880-1 3/4 604 (700-1 3/4)	3880-2 604 (700-2)	4040-2 3/4 764 (800-2 3/4)
S-ASR 31 †	3820/40	628 (600-3/4)	3820/60 628 (600-1 1/4)	3820-1 1/2 628 (600-1 1/2)	3820-1 3/4 628 (600-1 3/4)

LOC FAF to MAP 5 NM					
Knots	60	90	120	150	180
Min:Sec	5:00	3:20	2:30	2:00	1:40

NC-1, 22 OCT 2009 to 19 NOV 2009

NC-1, 22 OCT 2009 to 19 NOV 2009