

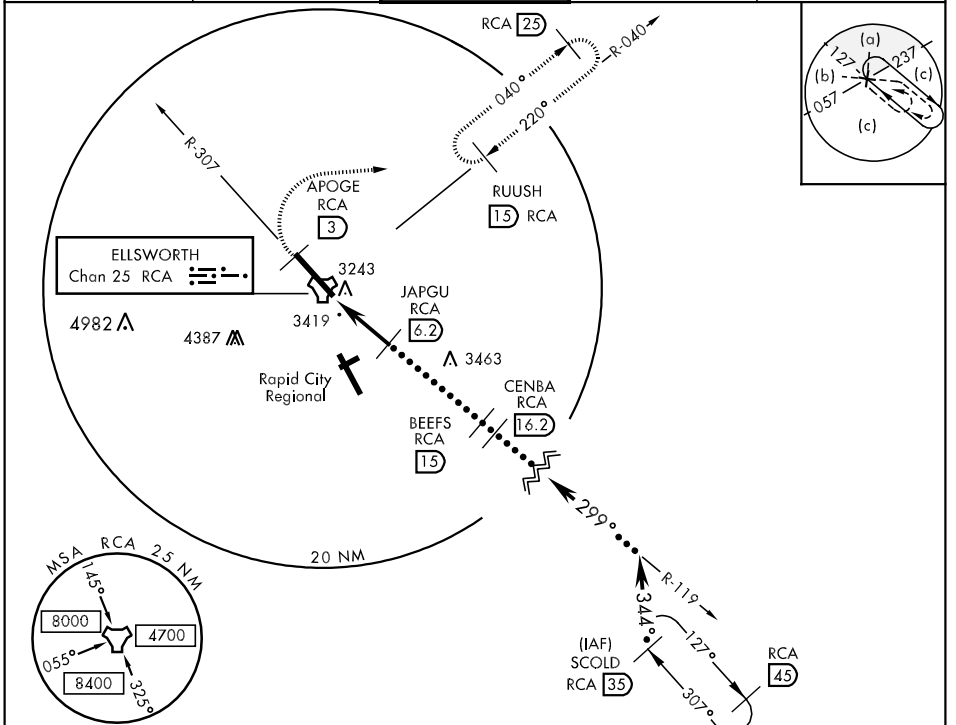
TACAN RCA Chan 25	APCH CRS 299°	Rwy Idg 13,497 TDZE 3192 Arpt Elev 3276	JAL-343 [USAF]	ELLSWORTH AFB (KRCA)
-----------------------------	-------------------------	--	----------------	----------------------

* When ALS inop, increase CAT CDE vis 1/2 mile.
 ** CAT E circling restricted to 28th BW aircraft only; 28th BW aircraft will remain within Class D airspace.

ALSF-1

MISSED APPROACH: Track outbound RCA R-307 to 3 DME (APOGE), then turn right to join RCA R-040 outbound to (RUUSH) RCA 15 DME and hold. Maintain 6000.

ATIS ★ 120.625 269.9	ELLSWORTH APP CON 119.5 259.1	ELLSWORTH TOWER ★ 126.05 253.5	GND CON 121.8 275.8	ASR
--------------------------------	---	--	-------------------------------	-----



EMERG SAFE ALT 100 NM 9800

APOGE RCA R-307	6000	RUUSH RCA R-040	SCOLD R-127
TACAN	2.6	JAPGU 6.2	BEEFS 15
1.3	5000	CENBA 16.2	Intcp R-119
	4.9 NM	6000	FL180
		6300	344°
			3.06° TCH 71

CATEGORY	C	D	E
S-31 *	3820/60 628 (600-1¼)	3820-1½ 628 (600-1½)	3820-1¾ 628 (600-1¾)
CIRCLING **	3880-1¾ 604 (700-1¾)	3880-2 604 (700-2)	4040-2¾ 764 (800-2¾)
S-ASR 31 *	3820/60 628 (600-1¼)	3820-1½ 628 (600-1½)	3820-1¾ 628 (600-1¾)

NC-1, 22 OCT 2009 to 19 NOV 2009

NC-1, 22 OCT 2009 to 19 NOV 2009